

EyeRounds.org

Idiopathic sclerochoroidal calcification

Category(ies): Retina, Vitreous

Contributor: [Jesse Vislisel, MD](#)

Photographer: Stefani Karakas, CRA

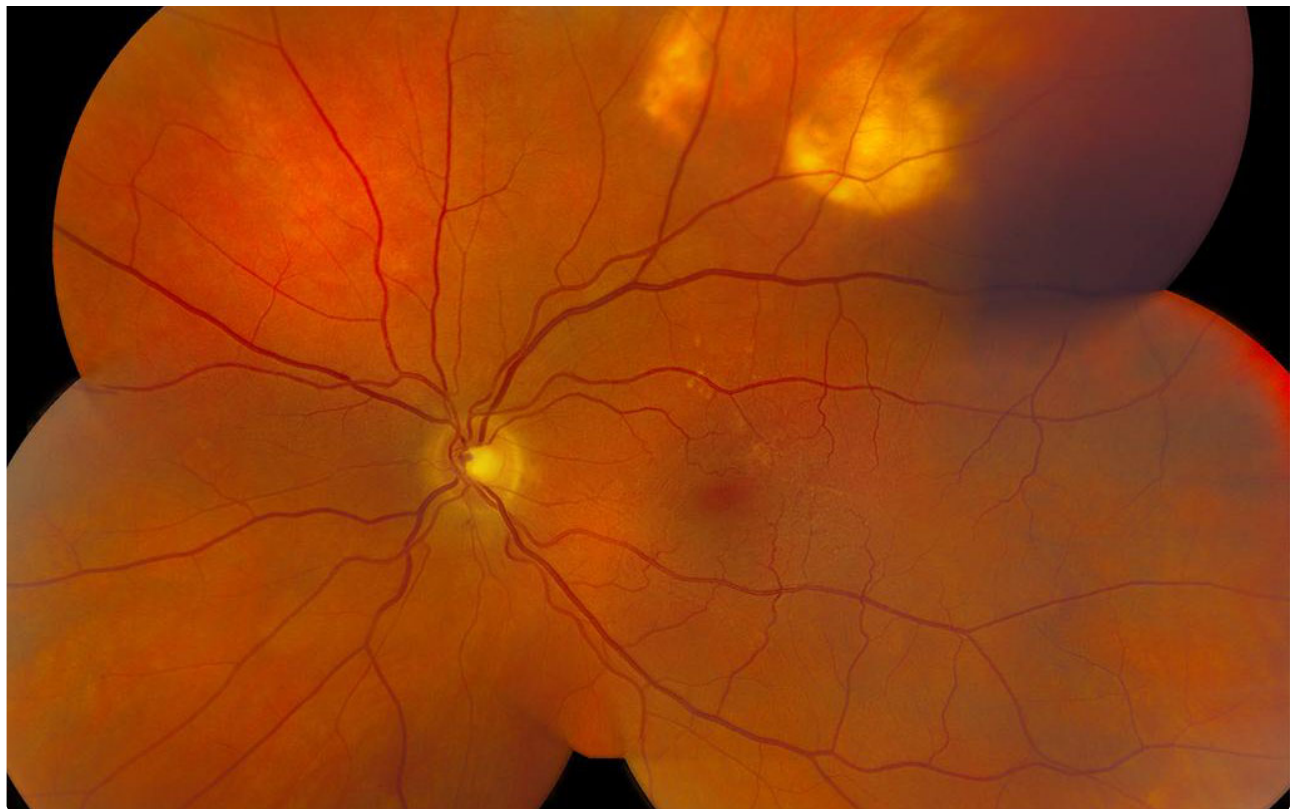
Sclerochoroidal calcification results from the deposition of calcium salts in the sclera and choroid which may be idiopathic, secondary to hypercalcemia, or associated with Gitelman or Bartter syndromes. The lesions are most commonly bilateral and located peripherally in the superotemporal quadrant, often along the arcades. They are frequently multiple. These features help to differentiate them from [choroidal osteomas](#) which are usually solitary, unilateral, juxtapapillary, and seen in younger adults.



Right Eye

[🔍 Enlarge](#) [📄 Download](#)





Left Eye

[Enlarge](#) [Download](#)

Reference:

- Shields JA, Shields CL. CME review: sclerochoroidal calcification: the 2001 Harold Gifford Lecture. Retina. 2002 ;22(3):251-61.

Image Permissions:



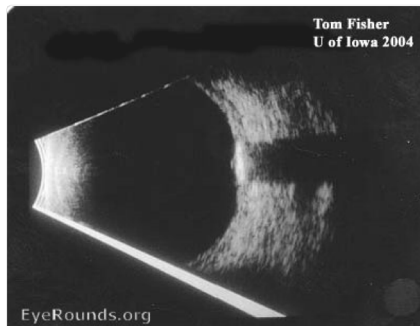
Ophthalmic Atlas Images by [EyeRounds.org](#), [The University of Iowa](#) are licensed under a [Creative Commons Attribution-NonCommercial-NoDerivs 3.0 Unported License](#).



Related Articles



[Related Atlas Entry: Idiopathic sclerochoroidal calcification](#)



[Related Atlas Entry: Choroidal osteoma US](#)



[Related Atlas Entry: Choroidal osteoma](#)

Address

University of Iowa
Roy J. and Lucille A. Carver College
of Medicine
Department of Ophthalmology and
Visual Sciences
200 Hawkins Drive
Iowa City, IA 52242

[Support Us](#)

Legal

Copyright © 2019 The University of
Iowa. All Rights Reserved
[Report an issue with this page](#)
[Web Privacy Policy](#) |
[Nondiscrimination Statement](#)

Related Links

[Cataract Surgery for Greenhorns](#)
[EyeTransillumination](#)
[Gonioscopy.org](#)
[Iowa Glaucoma Curriculum](#)
[Iowa Wet Lab](#)
[Patient Information](#)
[Stone Rounds](#)
[The Best Hits Bookshelf](#)

EyeRounds Social Media

Follow



Receive notification of new cases,
[sign up here](#)
[Contact Us](#)
[Submit a Suggestion](#)