

Optic Disc Notch and Retinal Nerve Fiber Layer Defect in Primary Open Angle Glaucoma

Category(ies): [Glaucoma](#), [Iris](#)

Contributor: [Jesse Vislisel, MD](#)

Photographer: [Jill Oulman](#)



Primary open angle glaucoma of the left eye.

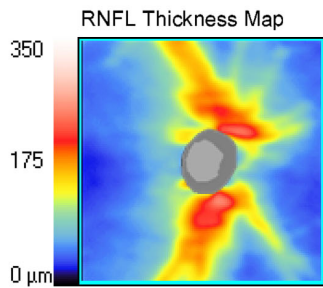



EYE ROUNDS.ORG

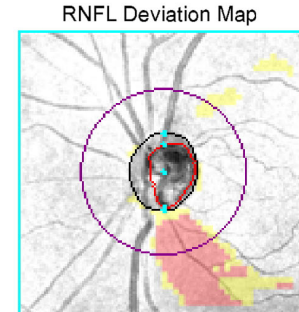
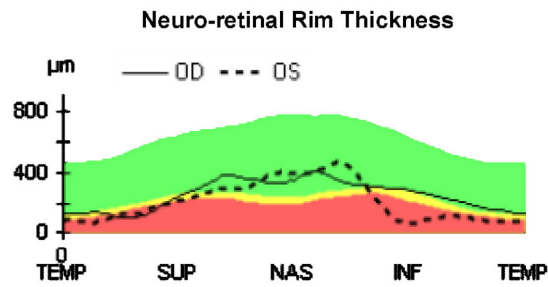
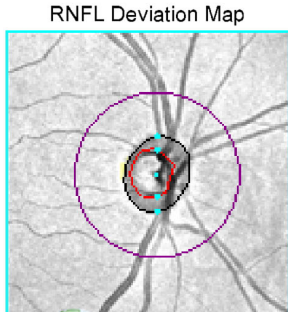
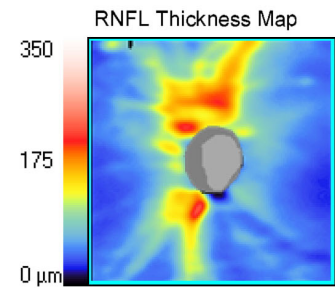
The optic nerve shows moderate cupping but there is a prominent inferior notch. The normal sheen of the nerve fiber layer is absent in a distribution radiating temporally from this notch due to cellular loss. The notch and nerve fiber layer defect can be more easily visualized on optical coherence tomography.

ONH and RNFL OU Analysis: Optic Disc Cube 200x200

OD ● OS



	OD	OS
 Average RNFL Thickness	104 μm	91 μm
RNFL Symmetry	59%	
Rim Area	1.01 mm^2	0.91 mm^2
Disc Area	1.71 mm^2	1.87 mm^2
Average C/D Ratio	0.65	0.73
Vertical C/D Ratio	0.66	0.84
Cup Volume	0.370 mm^3	0.561 mm^3



EYE ROUNDS.ORG

Humphrey visual field shows a corresponding superior arcuate scotoma.

[Enlarge](#) [Download](#)

Image Permissions:



Ophthalmic Atlas Images by EyeRounds.org, The University of Iowa are licensed under a [Creative Commons Attribution-NonCommercial-NoDerivs 3.0 Unported License](https://creativecommons.org/licenses/by-nc-nd/3.0/).

Address

University of Iowa
Roy J. and Lucille A. Carver College
of Medicine
Department of Ophthalmology and
Visual Sciences
200 Hawkins Drive
Iowa City, IA 52242

[Support Us](#)

Legal

Copyright © 2019 The University of
Iowa. All Rights Reserved
[Report an issue with this page](#)
[Web Privacy Policy](#) |
[Nondiscrimination Statement](#)

Related Links

[Cataract Surgery for Greenhorns](#)
[EyeTransillumination](#)
[Gonioscopy.org](#)
[Iowa Glaucoma Curriculum](#)
[Iowa Wet Lab](#)
[Patient Information](#)
[Stone Rounds](#)
[The Best Hits Bookshelf](#)

EyeRounds Social Media

Follow



Receive notification of new cases,
sign up here
[Contact Us](#)
[Submit a Suggestion](#)