

Optic nerve sheath meningioma

Category(ies): Neuro-ophthalmology, Retina, Vitreous

Contributor: [John Chen, MD, PhD](#)

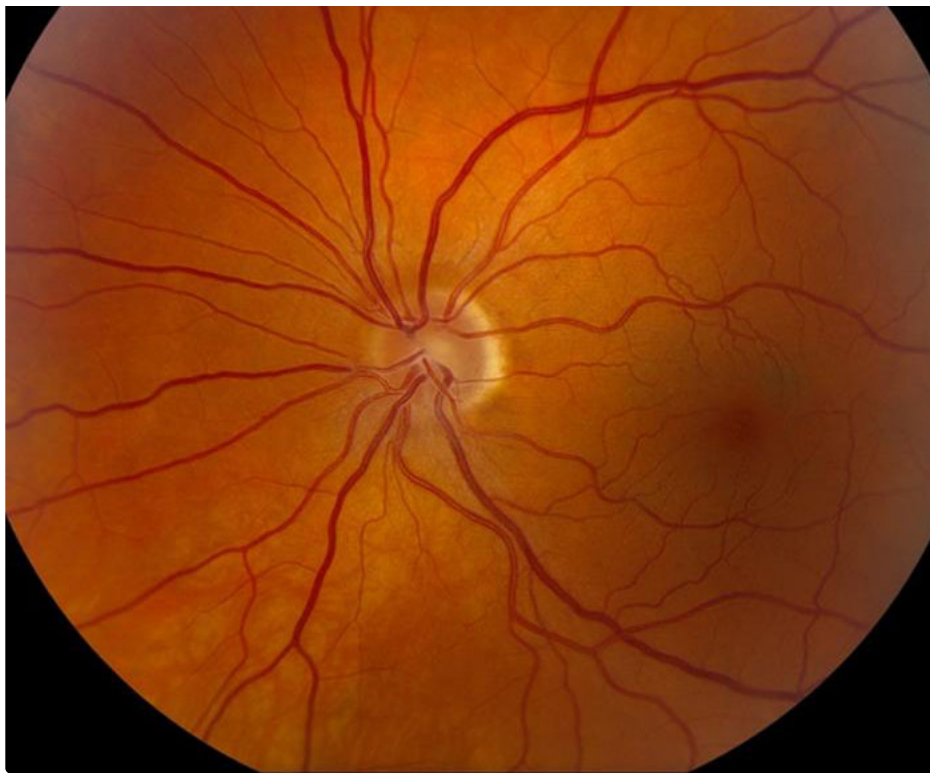


This patient presented with slowly progressive painless vision loss in the right eye. Dilated fundus examination demonstrates mild chronic appearing disc edema and dilated veins in the right eye, while the left eye is unaffected. MRI T1-weighted images with contrast show enlargement and enhancement of the optic nerve sheath consistent with an optic nerve sheath meningioma. The attenuated optic nerve is surrounded by the enhancing mass causing a "bull's eye" appearance on coronal and "tram track" appearance on axial images (red arrows).



[Enlarge](#) [Download](#)

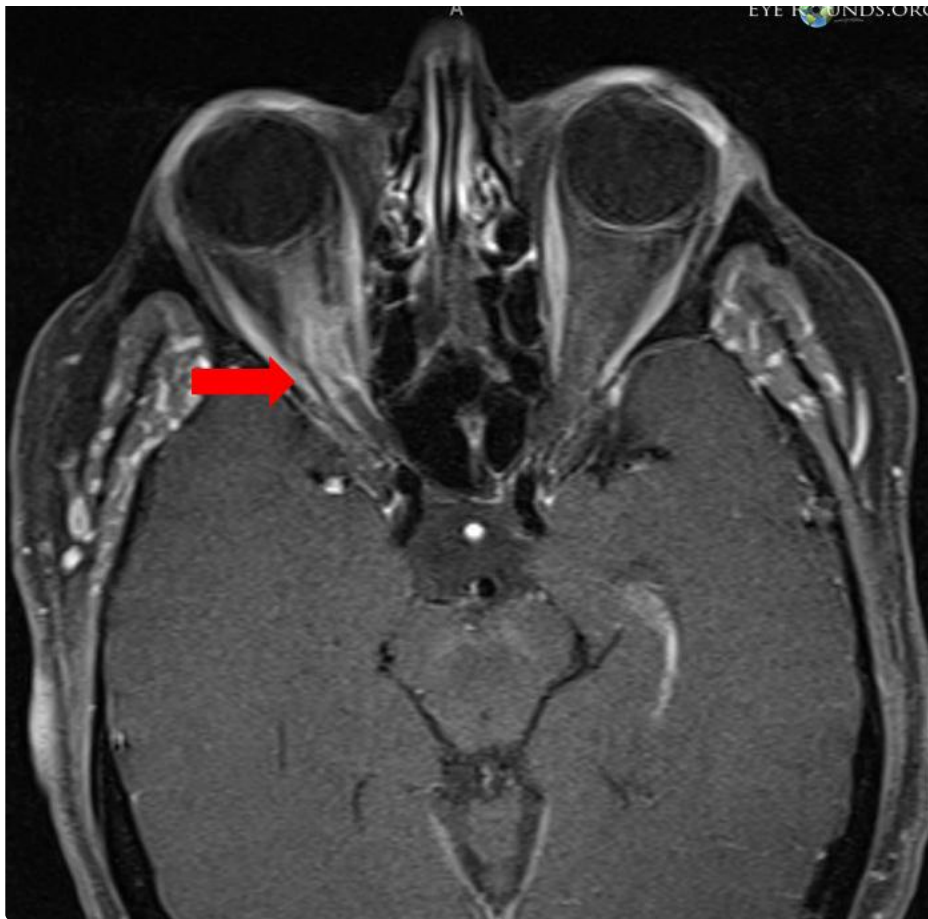




[Enlarge](#) [Download](#)



[Enlarge](#) [Download](#)



[Enlarge](#) [Download](#)

Image Permissions:



Ophthalmic Atlas Images by [EyeRounds.org](#), [The University of Iowa](#) are licensed under a [Creative Commons Attribution-NonCommercial-NoDerivs 3.0 Unported License](#).

Address

University of Iowa
Roy J. and Lucille A. Carver College
of Medicine
Department of Ophthalmology and
Visual Sciences
200 Hawkins Drive
Iowa City, IA 52242

[Support Us](#)

Legal

Copyright © 2019 The University of
Iowa. All Rights Reserved
[Report an issue with this page](#)
[Web Privacy Policy](#) |
[Nondiscrimination Statement](#)

Related Links

[Cataract Surgery for Greenhorns](#)
[EyeTransillumination](#)
[Gonioscopy.org](#)
[Iowa Glaucoma Curriculum](#)
[Iowa Wet Lab](#)
[Patient Information](#)
[Stone Rounds](#)
[The Best Hits Bookshelf](#)

EyeRounds Social Media

Follow



Receive notification of new cases,
[sign up here](#)
[Contact Us](#)
[Submit a Suggestion](#)