

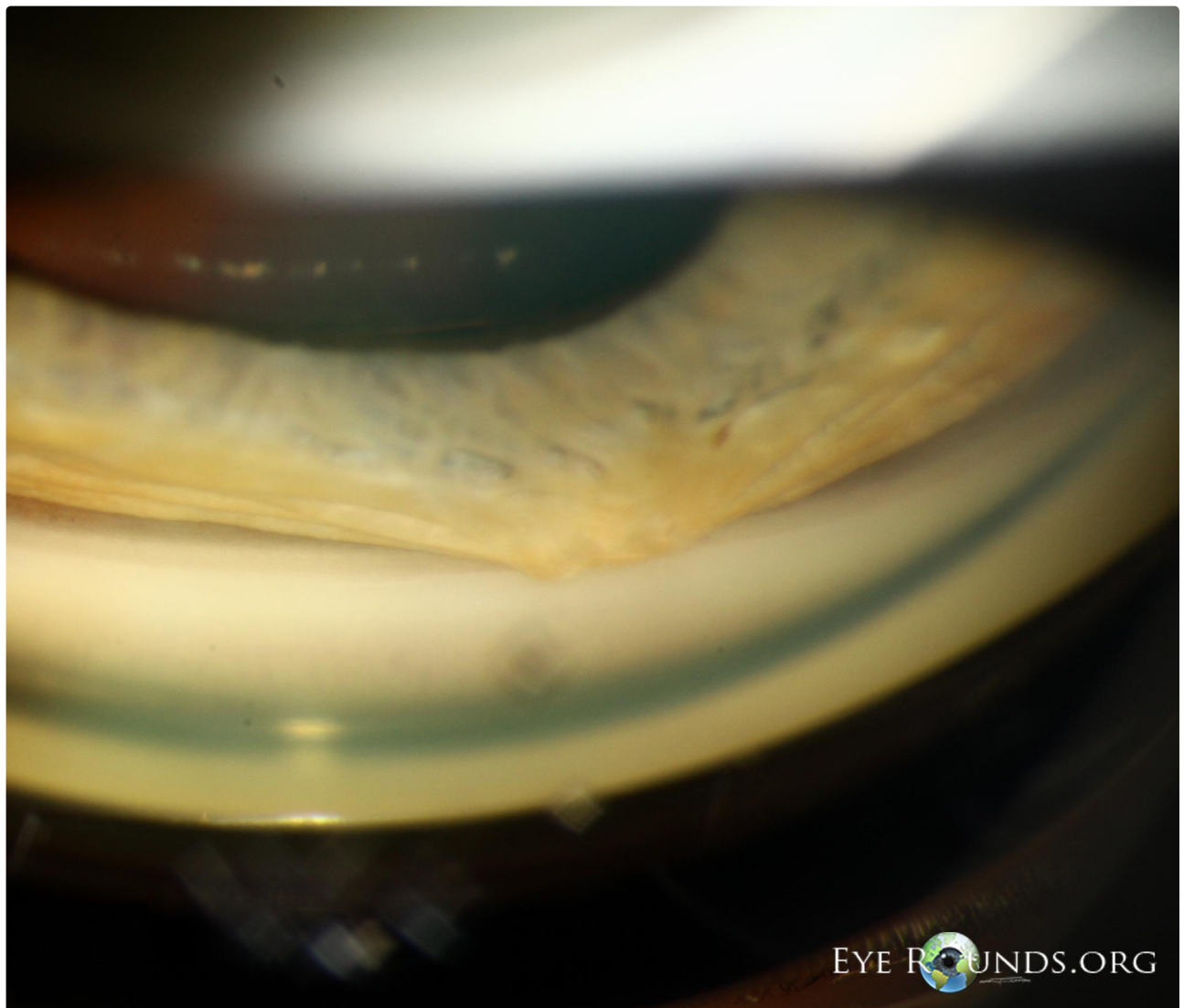
## High peripheral anterior synechia in iridocorneal endothelial syndrome

**Category(ies):** [Glaucoma/iris](#)

**Contributor:** [Justin Risma, MD](#)

**Photographer:** Brice Critser, CRA

Peripheral anterior synechiae (PAS) are adhesions of the peripheral iris to the structures in the angle of the anterior chamber. They may be associated with a variety of conditions such as angle closure glaucoma, neovascular glaucoma, uveitis, and iridocorneal endothelial (ICE) syndrome.



This gonioscopic photo demonstrates a high PAS which extends to Schwalbe's line and is characteristic of ICE syndrome.

[Enlarge](#)

[Download](#)

# High peripheral anterior synechia in iridocorneal endothelial syndrome

Category(ies): Glaucoma/iris

Contributor: [Andrew Goldstein, MD](#); and [Erin Boese, MD](#)

Photographer: Jody Troyer, CRA

This series of images was obtained in a 30-year-old female who presented for evaluation of an abnormal pupil and was subsequently diagnosed with iridocorneal endothelial (ICE) syndrome.

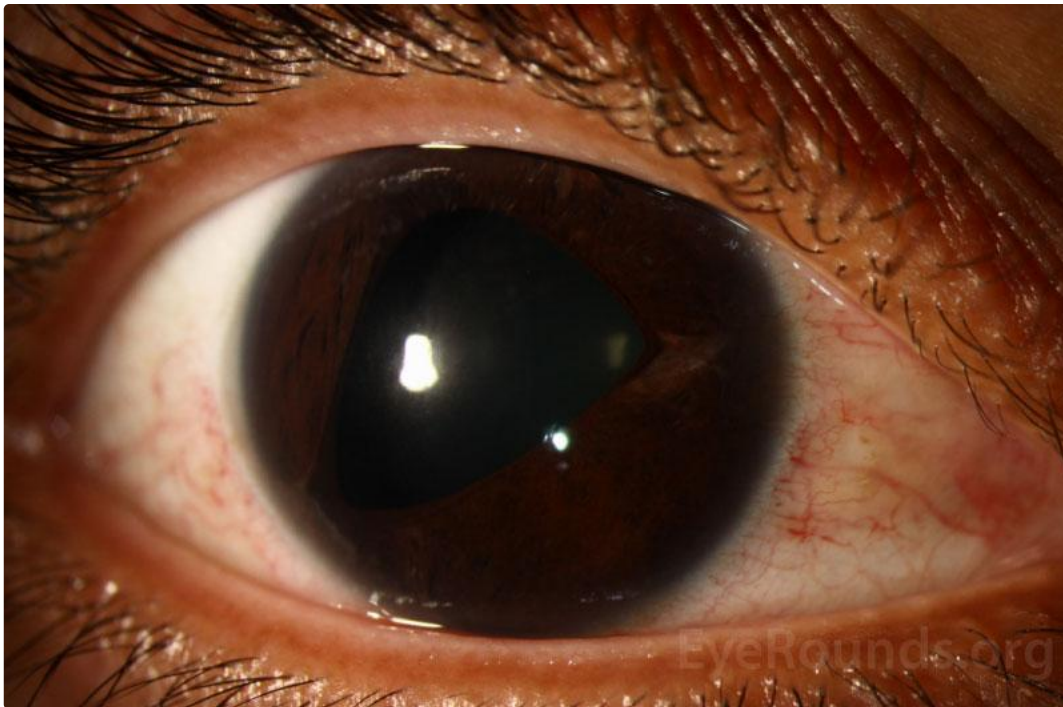


Figure 1: Color photography of the anterior segment of the right eye shows corectopia with the pupil drawn inferotemporally.

[Enlarge](#)

[Download](#)

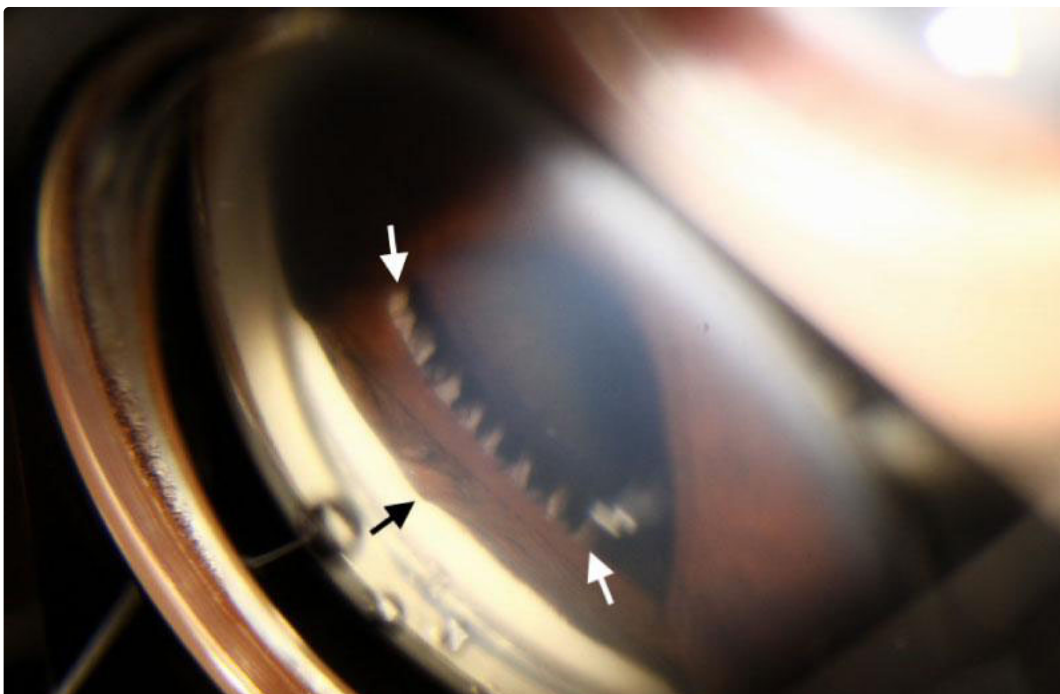




Figure 2: Gonioscopic photography of the right eye shows high peripheral anterior synechiae (PAS) noted by the black arrow and visible ciliary processes (between the white arrows).

[Enlarge](#) [Download](#)

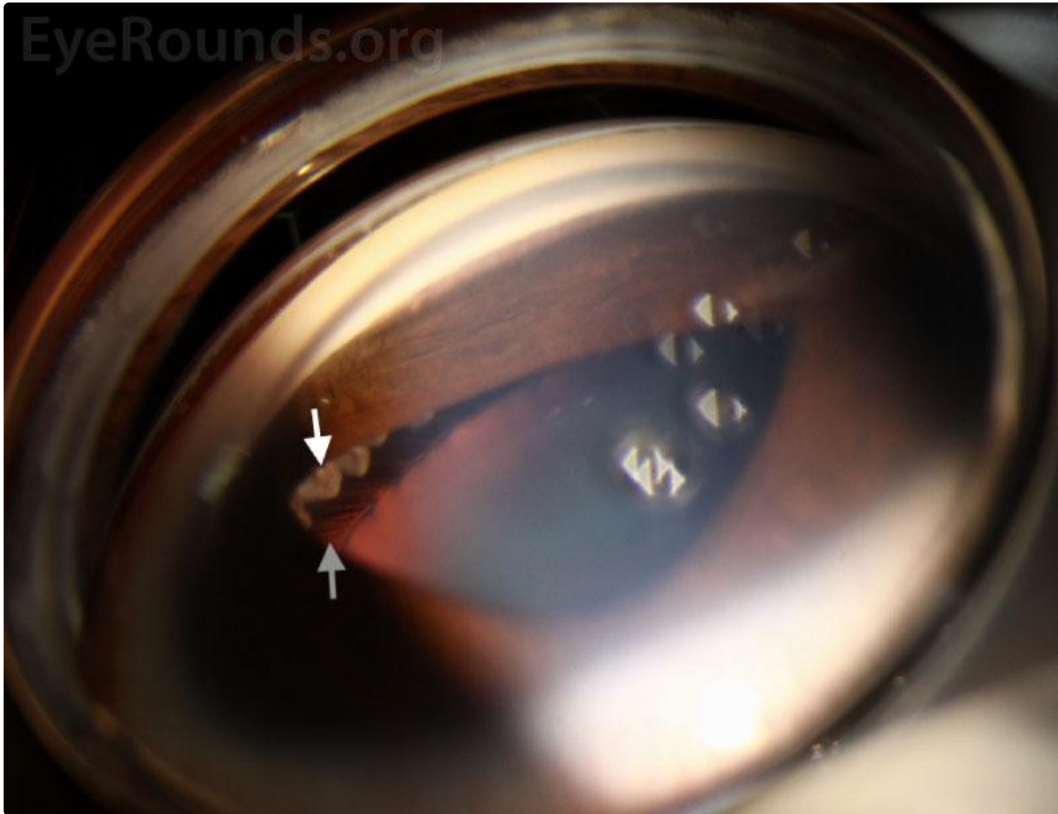


Figure 3: Gonioscopic photography of the right eye provides a unique view of the ciliary processes (white arrow) and zonules of the crystalline lens (grey arrow) due to high PAS.

[Enlarge](#) [Download](#)

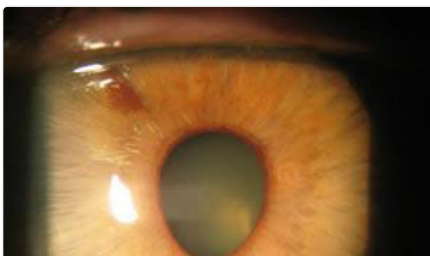
### Image Permissions:

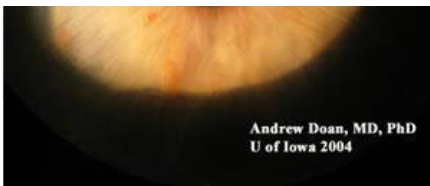


Ophthalmic Atlas Images by [EyeRounds.org](#), [The University of Iowa](#) are licensed under a [Creative Commons Attribution-NonCommercial-NoDerivs 3.0 Unported License](#).



### Related Articles





Andrew Doan, MD, PhD  
U of Iowa 2004

## Case - Iridocorneal Endothelial Syndrome (ICE)

### Address

University of Iowa  
Roy J. and Lucille A. Carver College  
of Medicine  
Department of Ophthalmology and  
Visual Sciences  
200 Hawkins Drive  
Iowa City, IA 52242

[Support Us](#)

### Legal

Copyright © 2019 The University of  
Iowa. All Rights Reserved  
[Report an issue with this page](#)  
[Web Privacy Policy](#) |  
[Nondiscrimination Statement](#)

### Related Links

[Cataract Surgery for Greenhorns](#)  
[EyeTransillumination](#)  
[Gonioscopy.org](#)  
[Iowa Glaucoma Curriculum](#)  
[Iowa Wet Lab](#)  
[Patient Information](#)  
[Stone Rounds](#)  
[The Best Hits Bookshelf](#)

### EyeRounds Social Media

Follow



[Receive notification of new cases, sign up here](#)  
[Contact Us](#)  
[Submit a Suggestion](#)