

Rhegmatogenous Retinal Detachment, Macula-Off

Category(ies): Retina, Vitreous

Contributor: [Eric Chin, MD](#)

Photographer: Cindy Montague, CRA



Patient

- A 62 year old female with a history of uncomplicated cataract surgery in both eyes, presented to the comprehensive clinic for decreased vision in the left eye since one day prior. She said her nasal field of vision had become abruptly and increasingly blurry while doing the laundry. She denied any flashes, floaters, or other complaints. She denied prior trauma or recent falls. She had no family history of retinal detachments.
- Vision: OD 20/25-3; OS 20/100+1
- IOP: 14 and 13
- Manifest refraction prior to cataract surgery:
 - OD: -13.25 +0.75 045
 - OS: -9.25 +0.50 040
 - Slit lamp exam: Posterior chamber intraocular lenses and posterior capsular opacities, both eyes

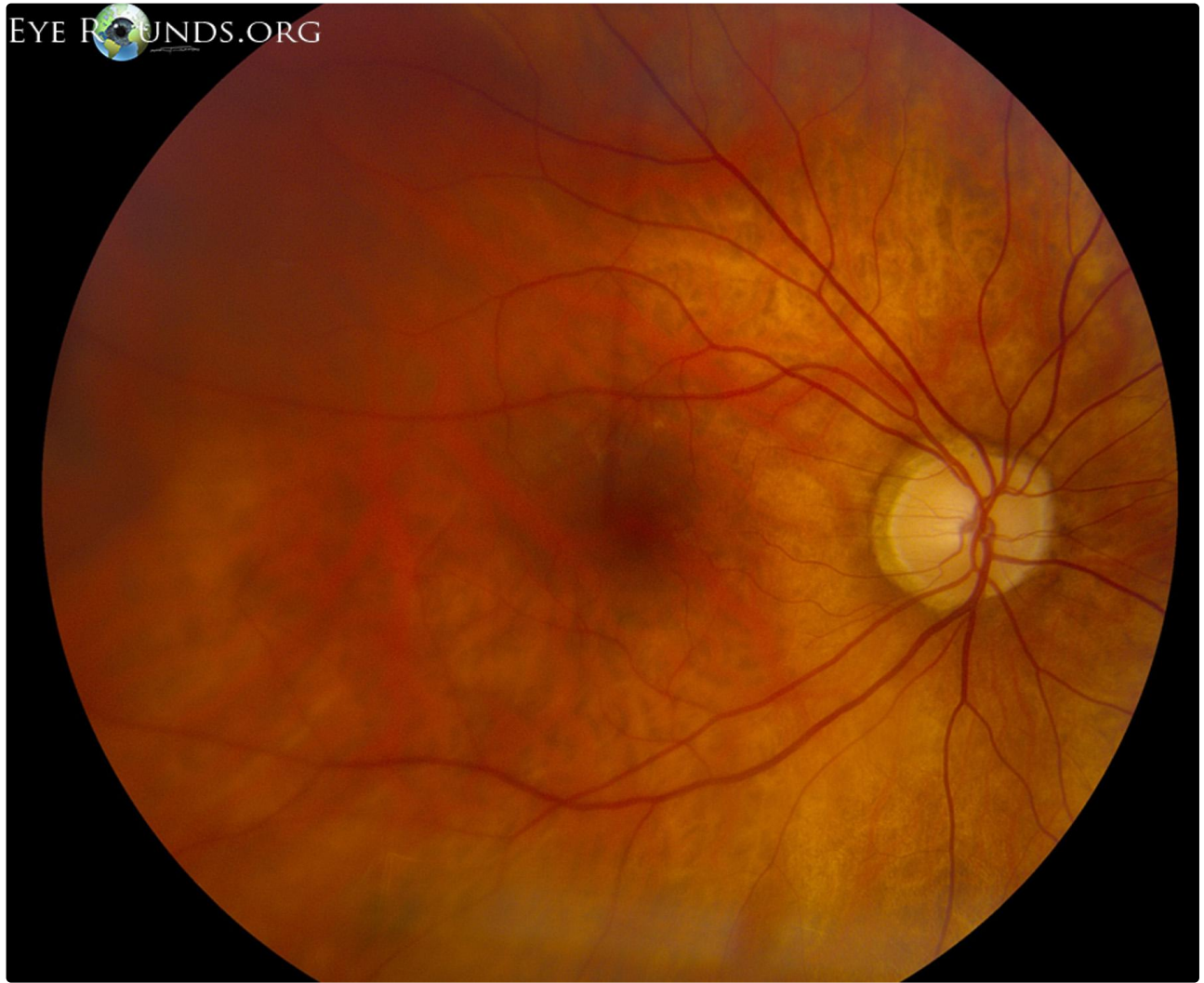
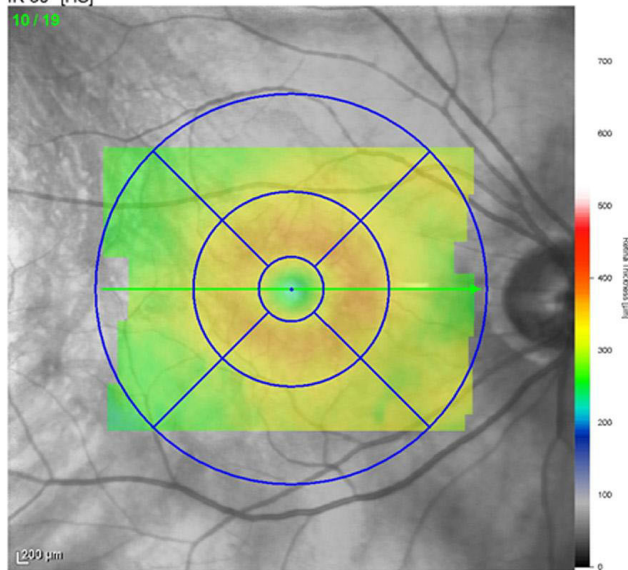


Image 1: OD: clear media; normal disc, vessels and macula; in the periphery, there were scattered areas of lattice degeneration (270 degrees from 4 to 1 o'clock clockwise) near the ora, however there were no other retinal tears or detachments.

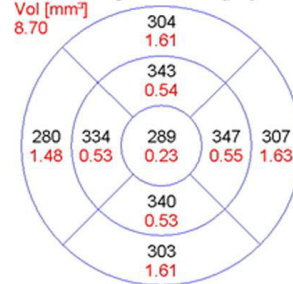
[Enlarge](#)

[Download](#)

IR 30° [HS]
10/19



Average Thickness [µm]



Center: 233 µm
 Central Min: 233 µm
 Central Max: 335 µm
 Circle Diameters: 1, 3, 6 mm ETDRS

OCT 20° (5.8 mm) ART (9) Q: 22 [HS]

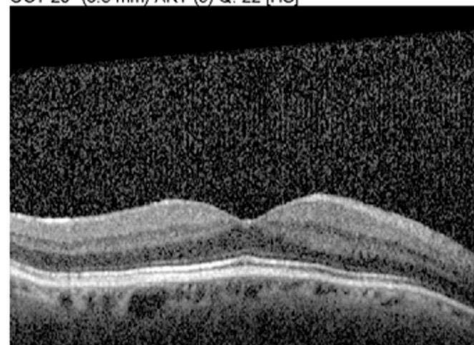




Image 2: OD OCT: normal

[Enlarge](#) [Download](#)

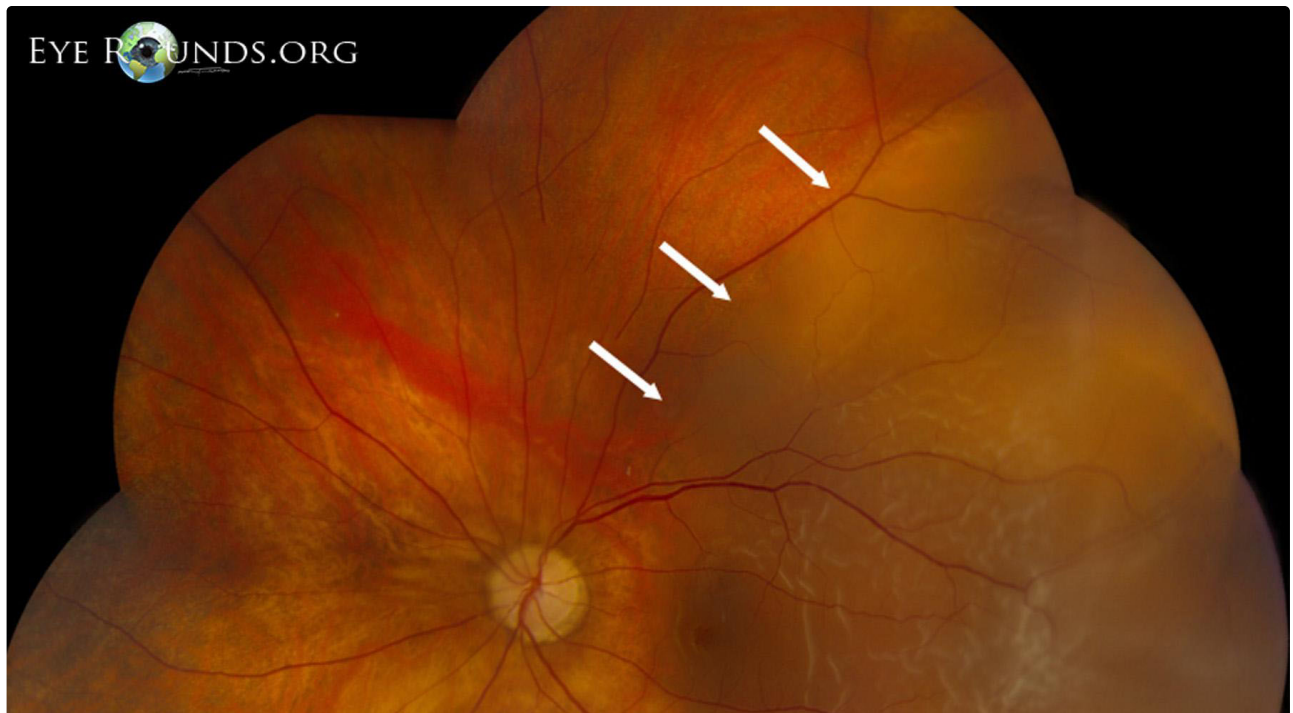




Image 3: OS: low magnification montage, rhegmatogenous macula-off retinal detachment (temporal to the white arrows); not shown, the patient had a horseshoe retinal tear at 1 o'clock near the ora, as well as multiple areas of lattice degeneration near the ora from 10 to 2 o'clock and 4 to 8 o'clock clockwise. Intraoperatively, there were multiple holes seen in her lattice degeneration at 5 o'clock and 6:30 o'clock.

[Enlarge](#) [Download](#)



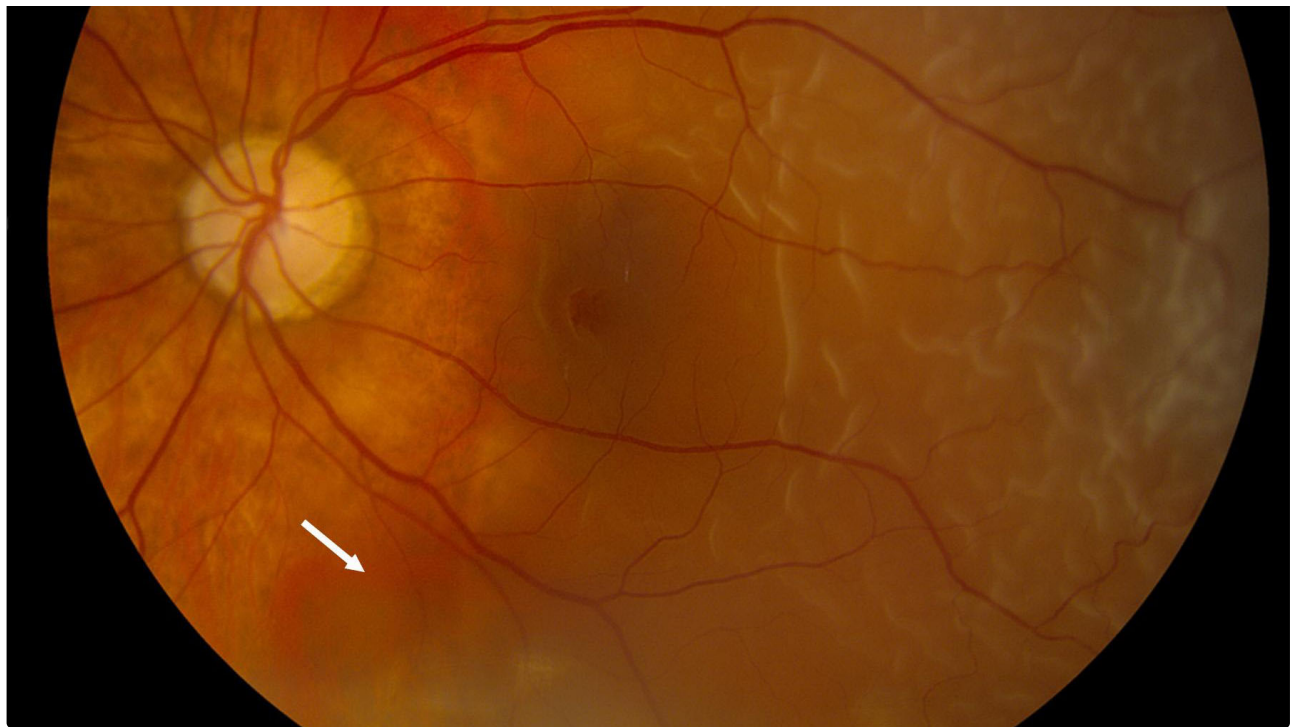
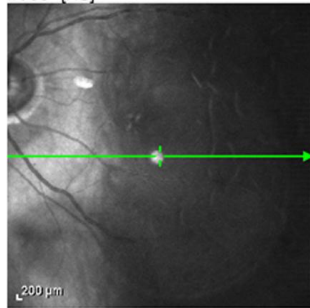


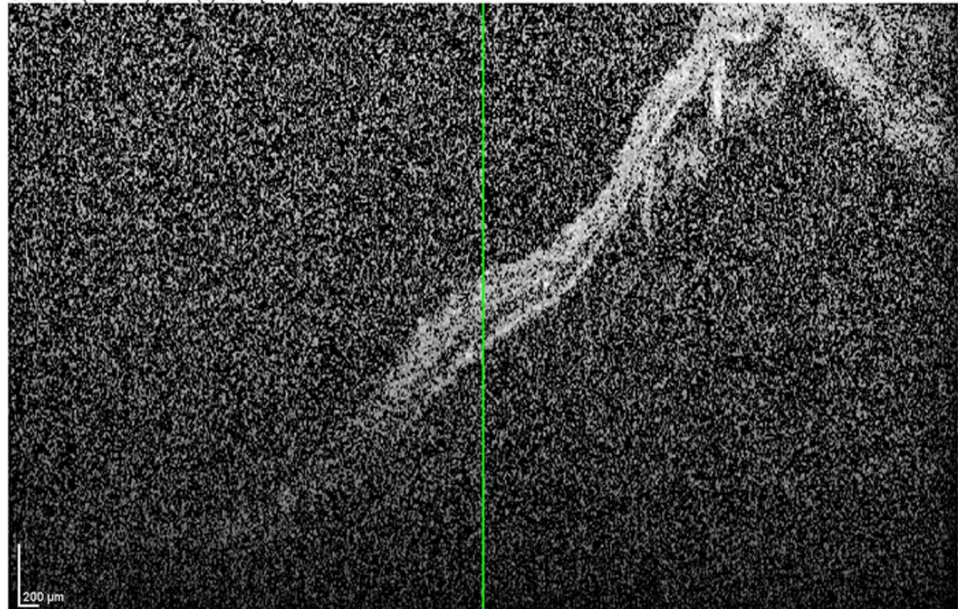
Image 4: OD: higher magnification of the rhegmatogenous retinal detachment that involves the macula.

[Enlarge](#) [Download](#)

IR 30° [HS]



OCT 30° (8.7 mm) ART (3) Q: 6 [HS]



EYE ROUNDS.ORG

Image 5: OCT OS: limited quality, macula-off retinal detachment without a macular hole.

[Enlarge](#) [Download](#)

- The patient underwent a scleral buckle, 25-gauge pars plana vitrectomy, laser indirect ophthalmoscopy, air-fluid exchange, and injection of 22% SF₆, in the left eye.
- The right eye was also treated with prophylactic laser indirect ophthalmoscopy intraoperatively.

Risk Factors for Retinal Detachments

- **Age***
- **High myopia***
- **Co-morbid eye conditions, such as lattice degeneration***

- **Prior eye surgery***
- Prior retinal detachment
- Family history of retinal detachment
- Trauma

***Risk factors seen in our patient are highlighted in bold.**

Image Permissions:



Ophthalmic Atlas Images by [EyeRounds.org](https://www.eyerounds.org), [The University of Iowa](https://www.theuniversityofiowa.edu) are licensed under a [Creative Commons Attribution-NonCommercial-NoDerivs 3.0 Unported License](https://creativecommons.org/licenses/by-nc-nd/3.0/).

Address

University of Iowa
Roy J. and Lucille A. Carver College
of Medicine
Department of Ophthalmology and
Visual Sciences
200 Hawkins Drive
Iowa City, IA 52242

[Support Us](#)

Legal

Copyright © 2019 The University of
Iowa. All Rights Reserved
[Report an issue with this page](#)
[Web Privacy Policy](#) |
[Nondiscrimination Statement](#)

Related Links

[Cataract Surgery for Greenhorns](#)
[EyeTransillumination](#)
[Gonioscopy.org](https://gonioscopy.org)
[Iowa Glaucoma Curriculum](#)
[Iowa Wet Lab](#)
[Patient Information](#)
[Stone Rounds](#)
[The Best Hits Bookshelf](#)

EyeRounds Social Media

Follow



Receive notification of new cases,
[sign up here](#)
[Contact Us](#)
[Submit a Suggestion](#)