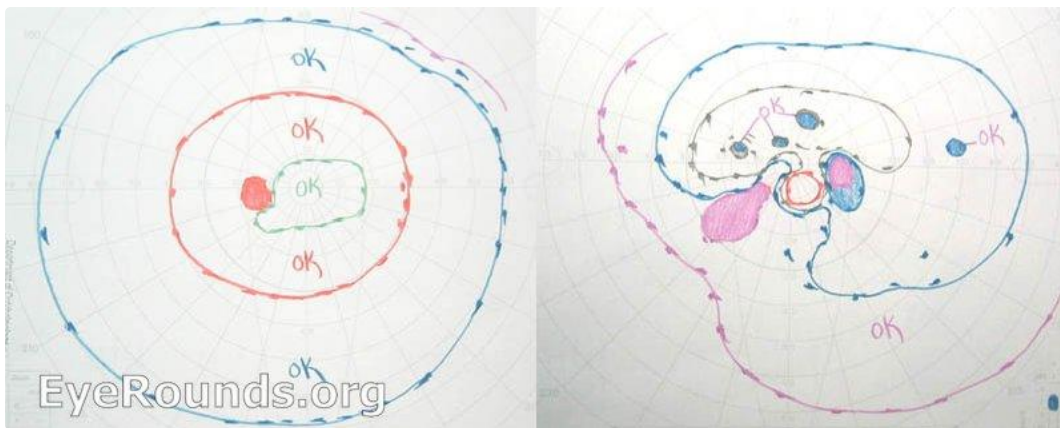


Sphenoid wing meningioma

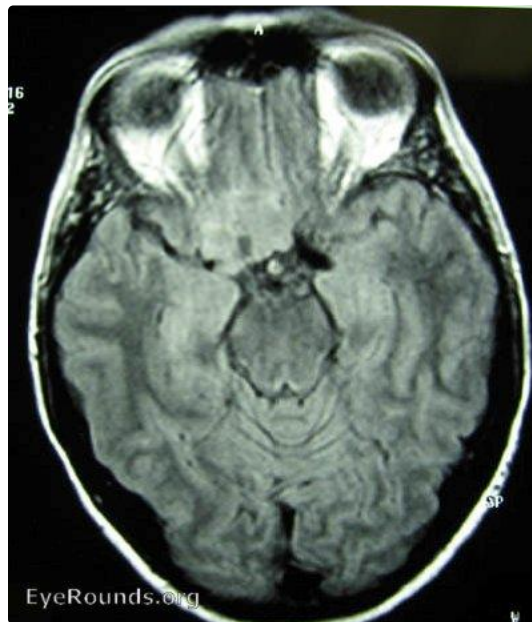
Category(ies): Neuro-ophthalmology

Contributor: [Andrew Doan, MD, PhD](#)



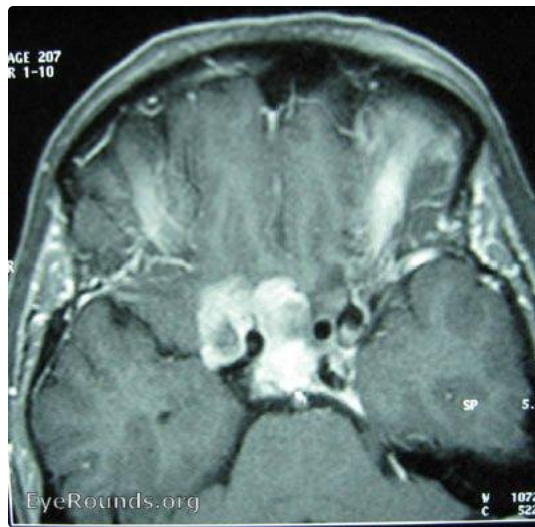
1) Visual fields with loss OD.

[Enlarge](#) [Download](#)



2) T1 MRI without contrast shows subtle, large hypo-intense mass near optic chiasm and sphenoid sinus on axial cuts.

[Enlarge](#) [Download](#)



3) T1, post-contrast MRI shows enhancing lesion (consistent with meningioma: dark on T1, enhances with contrast)

[Enlarge](#) [Download](#)



4) T1 post-contrast coronal MRI scan showing impingement on right optic nerve and chiasm.

[Enlarge](#) [Download](#)

Image Permissions:



Ophthalmic Atlas Images by [EyeRounds.org](#), [The University of Iowa](#) are licensed under a [Creative Commons Attribution-NonCommercial-NoDerivs 3.0 Unported License](#).

University of Iowa
Roy J. and Lucille A. Carver College
of Medicine
Department of Ophthalmology and
Visual Sciences
200 Hawkins Drive
Iowa City, IA 52242

[Support Us](#)

Copyright © 2019 The University of
Iowa. All Rights Reserved
[Report an issue with this page](#)
[Web Privacy Policy](#) |
[Nondiscrimination Statement](#)

[Cataract Surgery for Greenhorns](#)
[EyeTransillumination](#)
[Gonioscopy.org](#)
[Iowa Glaucoma Curriculum](#)
[Iowa Wet Lab](#)
[Patient Information](#)
[Stone Rounds](#)
[The Best Hits Bookshelf](#)

Follow



[Receive notification of new cases,
sign up here](#)
[Contact Us](#)
[Submit a Suggestion](#)