

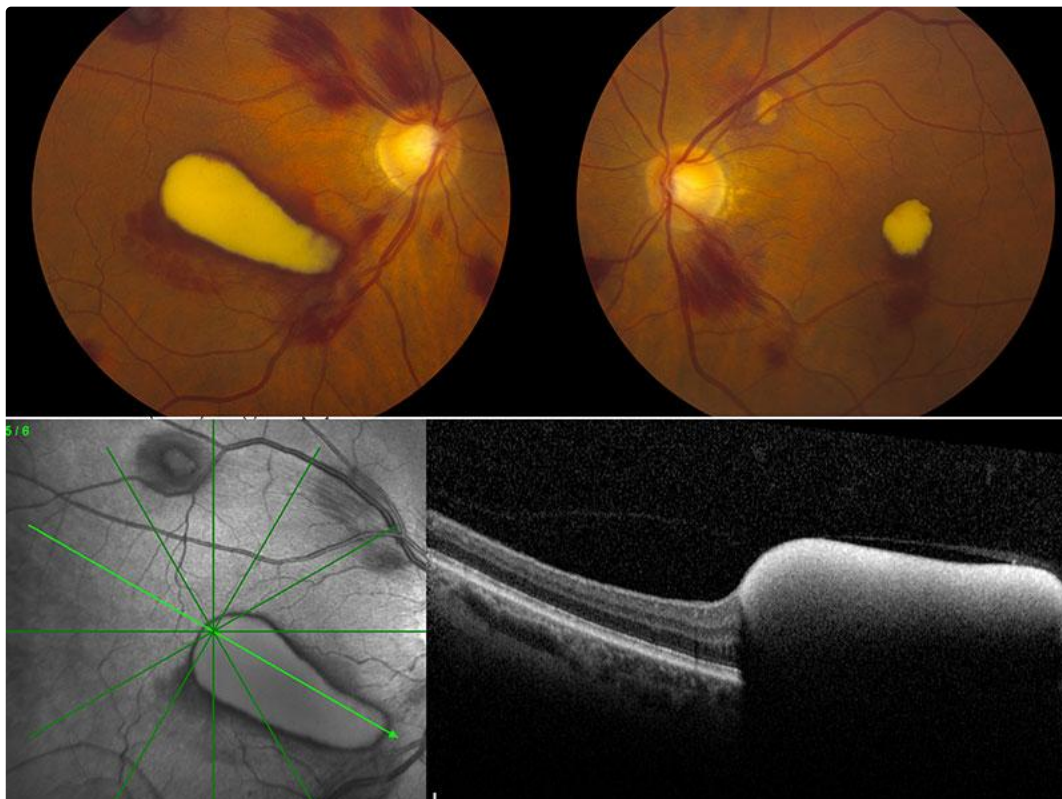
Valsalva Retinopathy with Sub-ILM hemorrhages in the setting of pancytopenia and pneumonia

Category(ies): Retina, Vitreous

Contributor: Matt Ward, MD



This is a 62-year-old man with a history of diffuse large B-cell lymphoma who had undergone autologous bone marrow transplantation and noted vision loss after a coughing episode while admitted for pancytopenia and pneumonia. The photo was taken 1 month after onset of symptoms and demonstrates hemorrhages in multiple layers of the retina, but most prominently beneath the internal limiting membrane as demonstrated by spectral domain OCT (distinct from sub-hyaloid or pre-retinal hemorrhage). At 1 month, the red cells had taken on a pale white color. Initial vision was 20/70 OD and 20/40 OS improving to 20/20 OD and stable at 20/40 OS 3 months after onset of symptoms with observation.



[Enlarge](#) [Download](#)

Image Permissions:



Address

University of Iowa
Roy J. and Lucille A. Carver College
of Medicine
Department of Ophthalmology and
Visual Sciences
200 Hawkins Drive
Iowa City, IA 52242

[Support Us](#)

Legal

Copyright © 2019 The University of
Iowa. All Rights Reserved
[Report an issue with this page](#)
[Web Privacy Policy](#) |
[Nondiscrimination Statement](#)

Related Links

[Cataract Surgery for Greenhorns](#)
[EyeTransillumination](#)
[Gonioscopy.org](#)
[Iowa Glaucoma Curriculum](#)
[Iowa Wet Lab](#)
[Patient Information](#)
[Stone Rounds](#)
[The Best Hits Bookshelf](#)

EyeRounds Social Media

Follow



Receive notification of new cases,
[sign up here](#)
[Contact Us](#)
[Submit a Suggestion](#)