

Macular hole and choroidal rupture

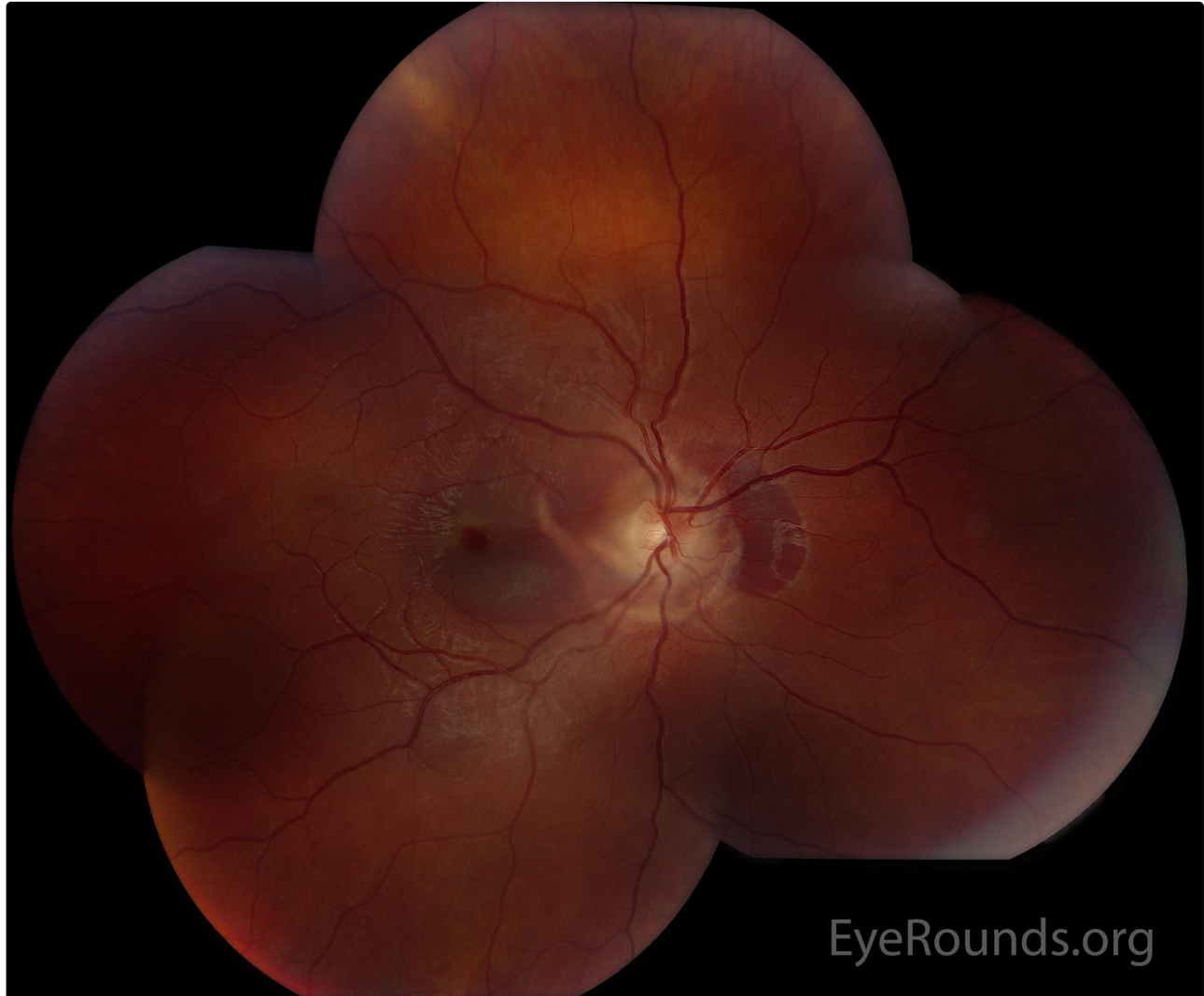
Category(ies): Trauma, Retina

Contributor: [Austin R. Fox, MD](#)

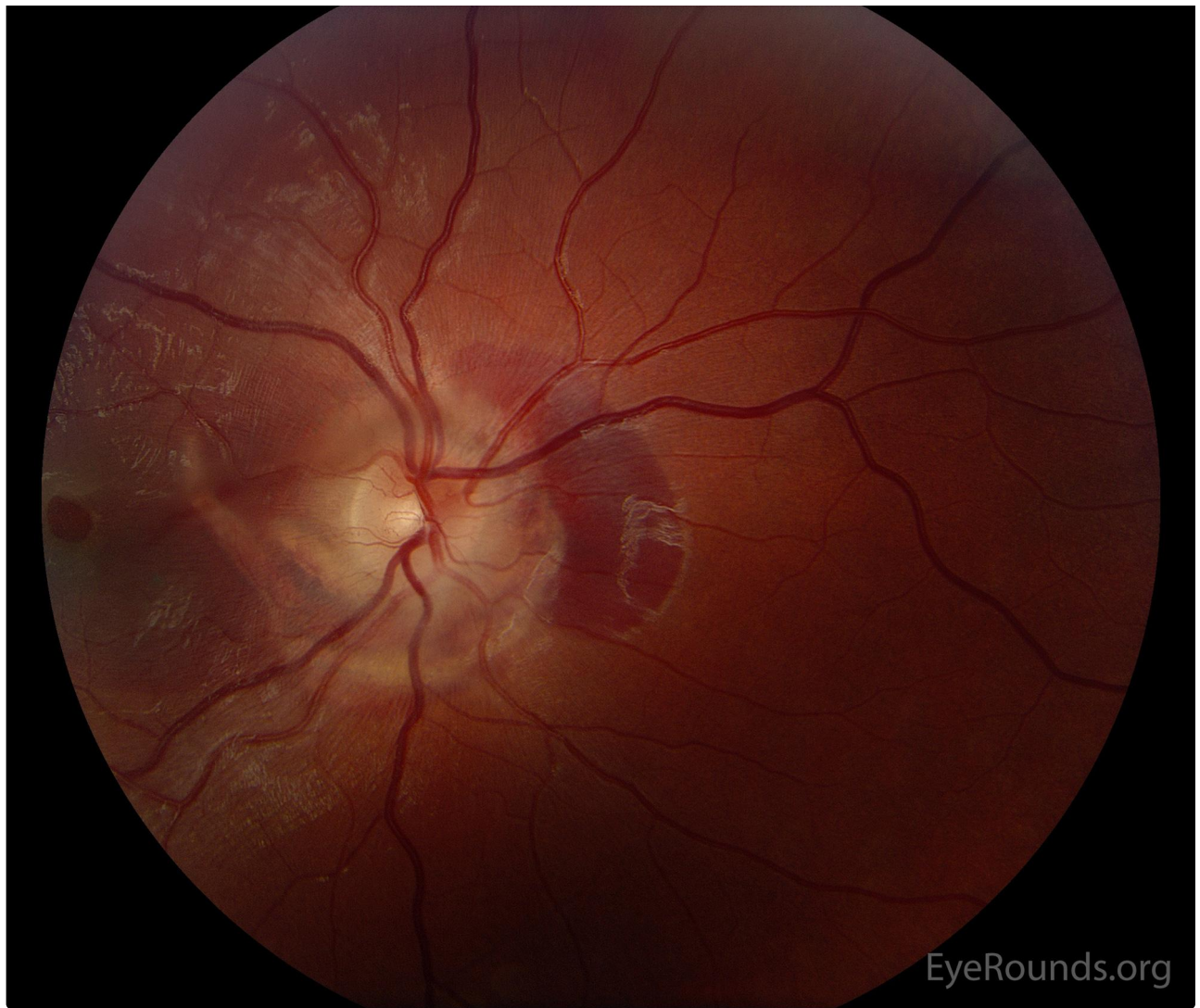
Photographer: Doreen Dykhuizen



This patient experienced blunt eye injury after bungee cord recoil. Color fundus montage photograph of the right eye shows a macular hole and peripapillary choroidal ruptures extending into the macula. There is subretinal hemorrhage and fluid inferior to the macular hole and in the peripapillary region. Optical coherence tomography (Heidelberg) demonstrates a partial-thickness macular hole with subretinal heme.

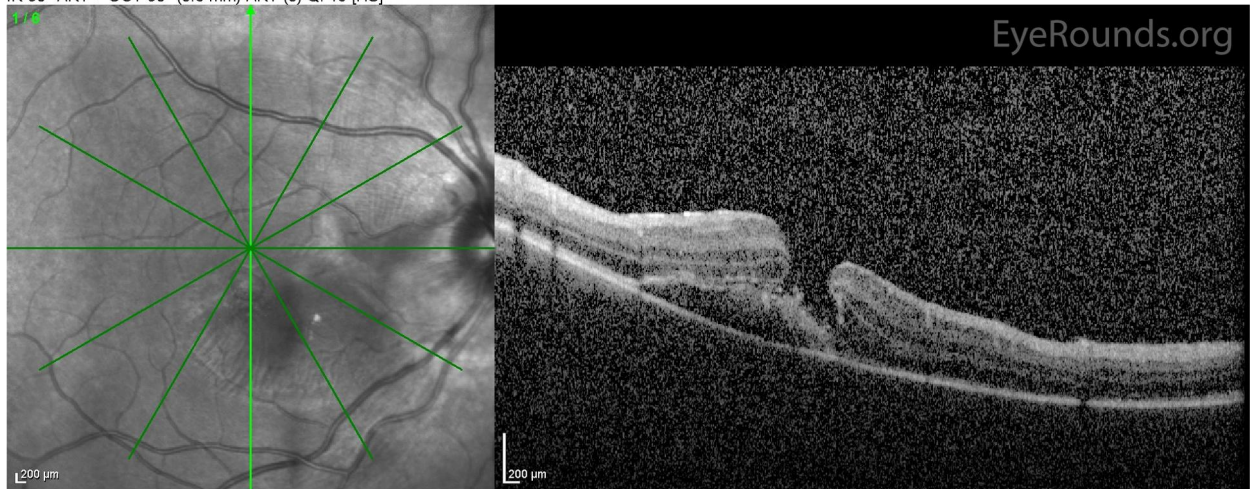


[Enlarge](#) [Download](#)

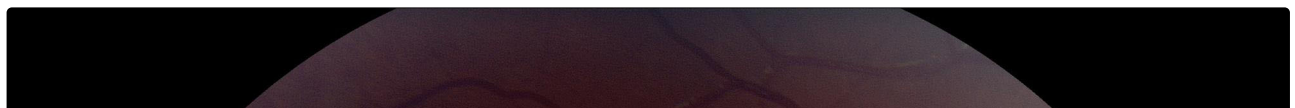


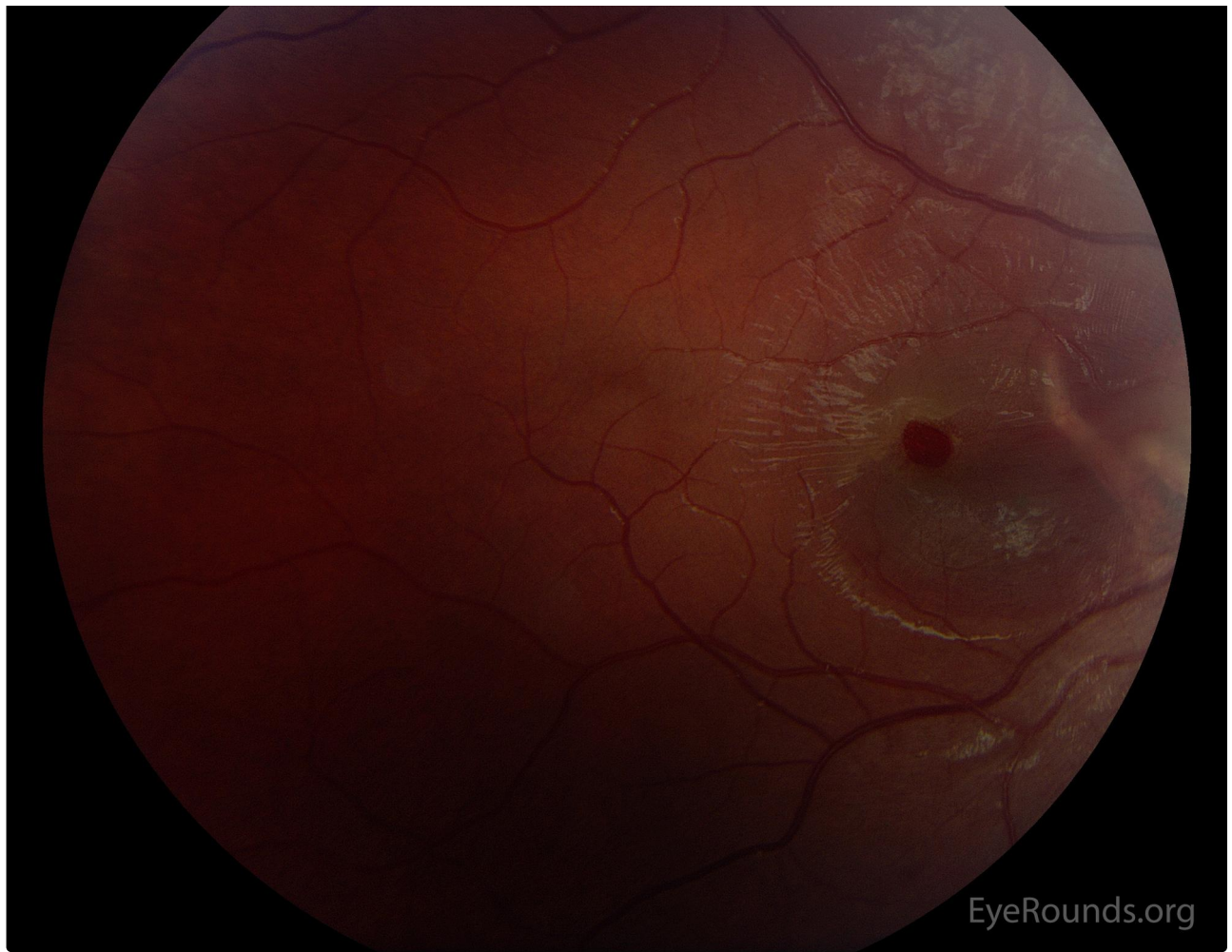
[Enlarge](#) [Download](#)

IR 30° ART + OCT 30° (8.6 mm) ART (8) Q: 19 [HS]



[Enlarge](#) [Download](#)





[Enlarge](#) [Download](#)

Contributor: [Andrew Doan, MD, PhD](#)



[Enlarge](#) [Download](#)

Image Permissions:



Ophthalmic Atlas Images by EyeRounds.org, The University of Iowa, are licensed under a Creative Commons Attribution-NonCommercial

Address

University of Iowa
Roy J. and Lucille A. Carver College
of Medicine
Department of Ophthalmology and
Visual Sciences
200 Hawkins Drive
Iowa City, IA 52242

[Support Us](#)

Legal

Copyright © 2019 The University of
Iowa. All Rights Reserved
[Report an issue with this page](#)
[Web Privacy Policy](#) |
[Nondiscrimination Statement](#)

Related Links

[Cataract Surgery for Greenhorns](#)
[EyeTransillumination](#)
[Gonioscopy.org](#)
[Iowa Glaucoma Curriculum](#)
[Iowa Wet Lab](#)
[Patient Information](#)
[Stone Rounds](#)
[The Best Hits Bookshelf](#)

EyeRounds Social Media

Follow



[Receive notification of new cases,
sign up here](#)
[Contact Us](#)
[Submit a Suggestion](#)