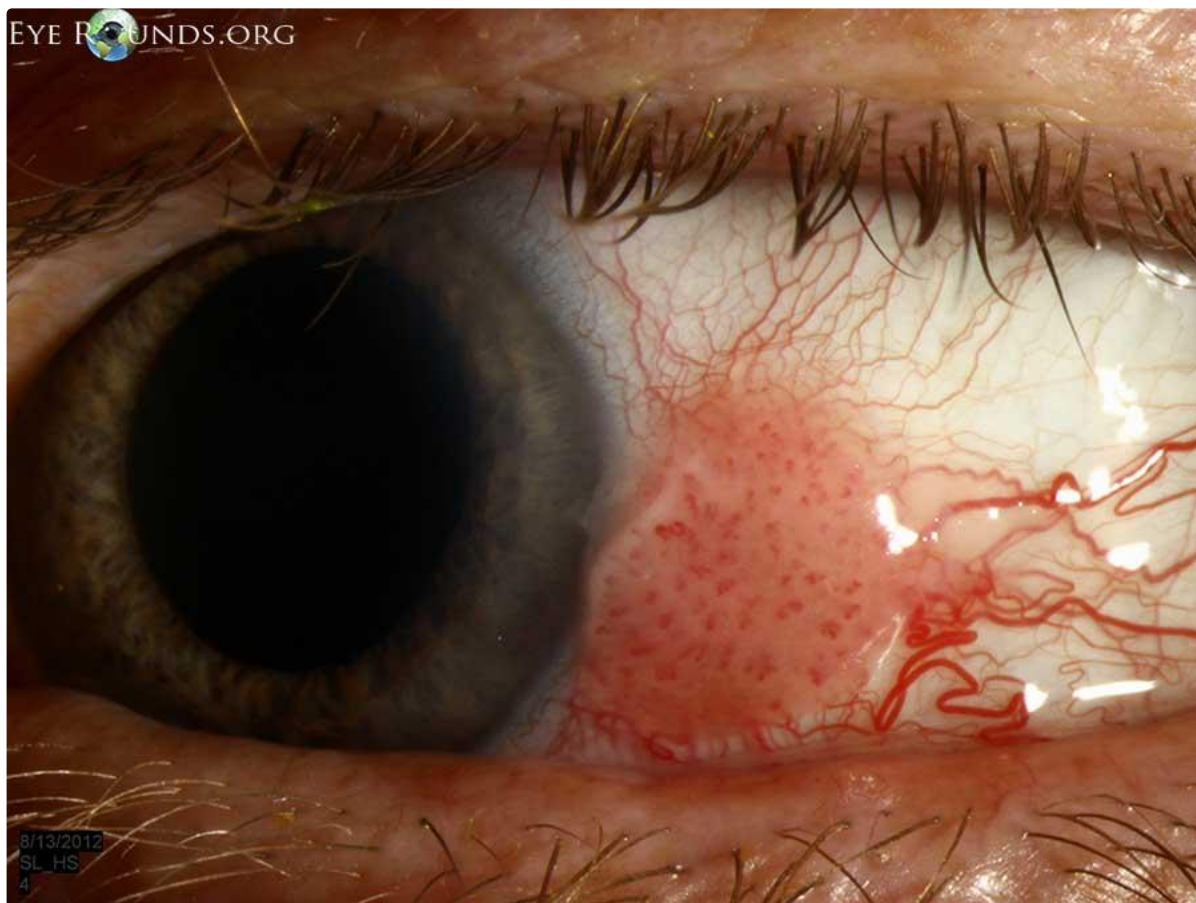


Conjunctival intraepithelial neoplasia (CIN) with full thickness dysplasia (squamous cell carcinoma in situ)

Category(ies): Cornea, External Disease

Contributor: John Chen, MD, PhD

Photographer: Cindy Montague, CRA

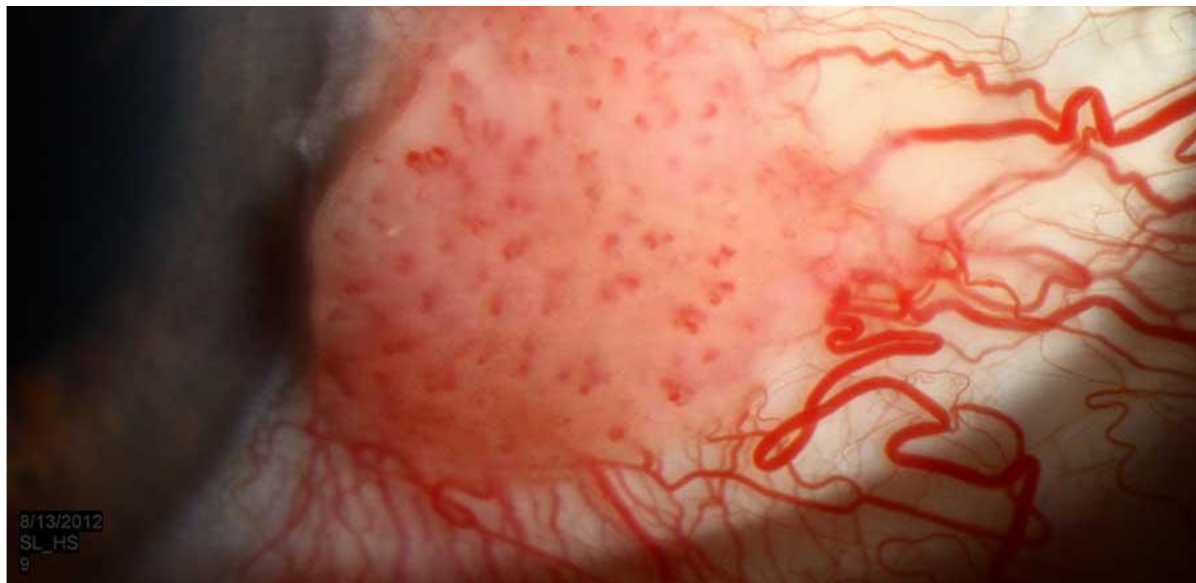


Conjunctival intraepithelial neoplasia (CIN) with full thickness dysplasia (squamous cell carcinoma in situ)

[Enlarge](#)

[Download](#)





Enlarged: Conjunctival intraepithelial neoplasia (CIN) with full thickness dysplasia (squamous cell carcinoma in situ)

[Enlarge](#) [Download](#)

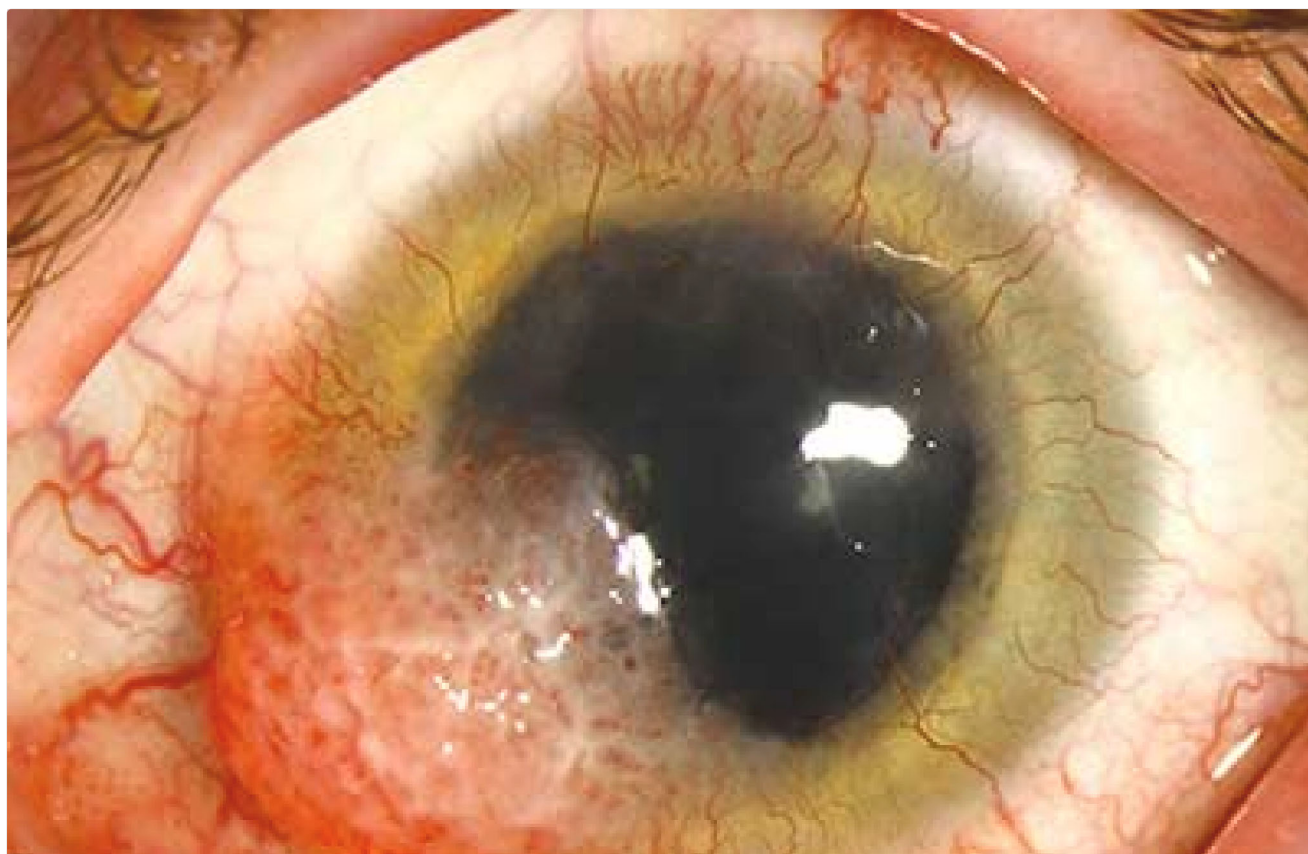
Image Permissions:



Ophthalmic Atlas Images by EyeRounds.org, The University of Iowa are licensed under a [Creative Commons Attribution-NonCommercial-NoDerivs 3.0 Unported License](http://creativecommons.org/licenses/by-nc-nd/3.0/).



Related Articles





[A Very Unusual Case of Ocular Surface Squamous Neoplasia.](#)

Address

University of Iowa
Roy J. and Lucille A. Carver College
of Medicine
Department of Ophthalmology and
Visual Sciences
200 Hawkins Drive
Iowa City, IA 52242

[Support Us](#)

Legal

Copyright © 2019 The University of
Iowa. All Rights Reserved
[Report an issue with this page](#)
[Web Privacy Policy](#) |
[Nondiscrimination Statement](#)

Related Links

[Cataract Surgery for Greenhorns](#)
[EyeTransillumination](#)
[Gonioscopy.org](#)
[Iowa Glaucoma Curriculum](#)
[Iowa Wet Lab](#)
[Patient Information](#)
[Stone Rounds](#)
[The Best Hits Bookshelf](#)

EyeRounds Social Media

Follow



Receive notification of new cases,
[sign up here](#)
[Contact Us](#)
[Submit a Suggestion](#)