

## Central Retinal Artery Occlusion (CRAO)

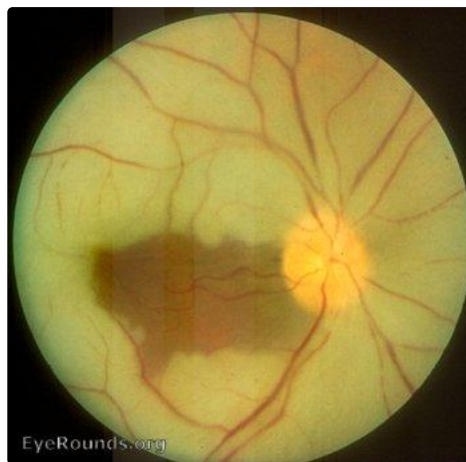
**Category(ies):** Retina, Vitreous

**Contributor:** Thomas A. Weingest, PhD, MD, University of Iowa

**Updated and Expanded by::** Cameron Wagner, BS and [Lorraine M. Provencher, MD](#)



Central retinal artery occlusion (CRAO) occurs when occlusion of the central retinal artery, a branch of the ophthalmic artery, results in infarction of the inner retina with subsequent, typically severe, vision loss. The picture above exhibits a CRAO with sparing of the foveal retina due to the presence of a cilioretinal artery. A cilioretinal artery has been found to be present in 49.5% of patients. The cilioretinal artery branches off the ophthalmic artery and supplies the inner retina in these individuals. This is in contradistinction to the posterior ciliary arteries, which branch off the ophthalmic artery and supply the choroid and outer retina. Patients with a cilioretinal artery may have preserved central vision in the unfortunate event of a CRAO.



Sparing of the fovea due to a ciliary retinal artery in the presence of a CRAO secondary to a cardiac myxoma.

 [Enlarge](#)

 [Download](#)

**Contributor:** [David Phillips, MD](#)

**Photographer:** Andrea Starkweather

This middle-aged male presented with an abrupt decrease in vision in the right eye 4 days prior. Note the retinal whitening, classic cherry red spot, and scattered cotton wool spots. The OCT shows inner retinal edema in the right eye (OD) compared to the normal retinal OCT in the left (OS). Also note the delayed filling of the macular arteries on the fluorescein angiogram.

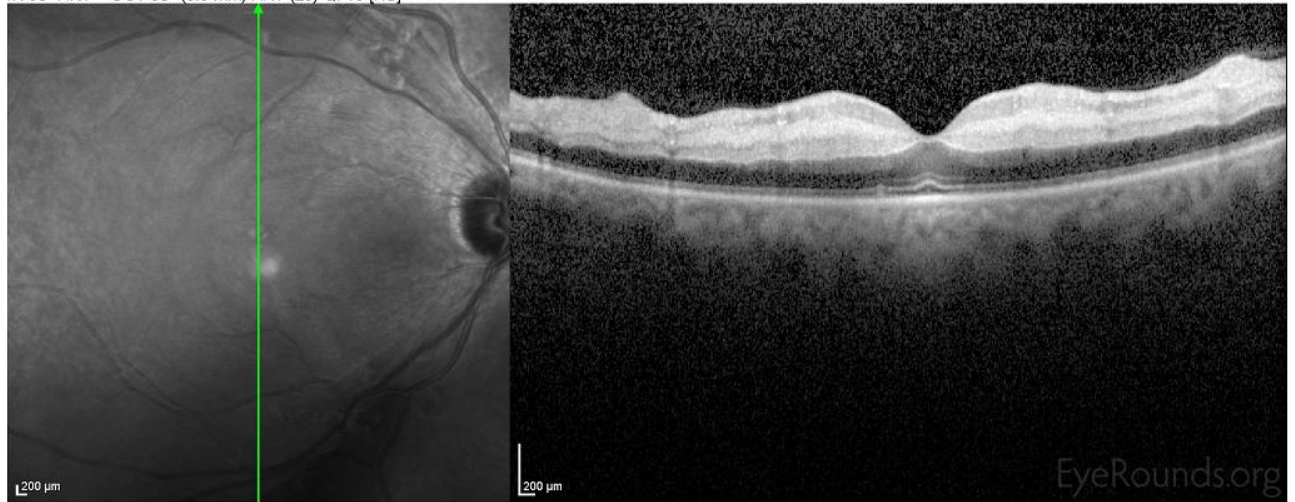




[Enlarge](#)

[Download](#)

IR 30° ART + OCT 30° (8.9 mm) ART (25) Q: 19 [HS]



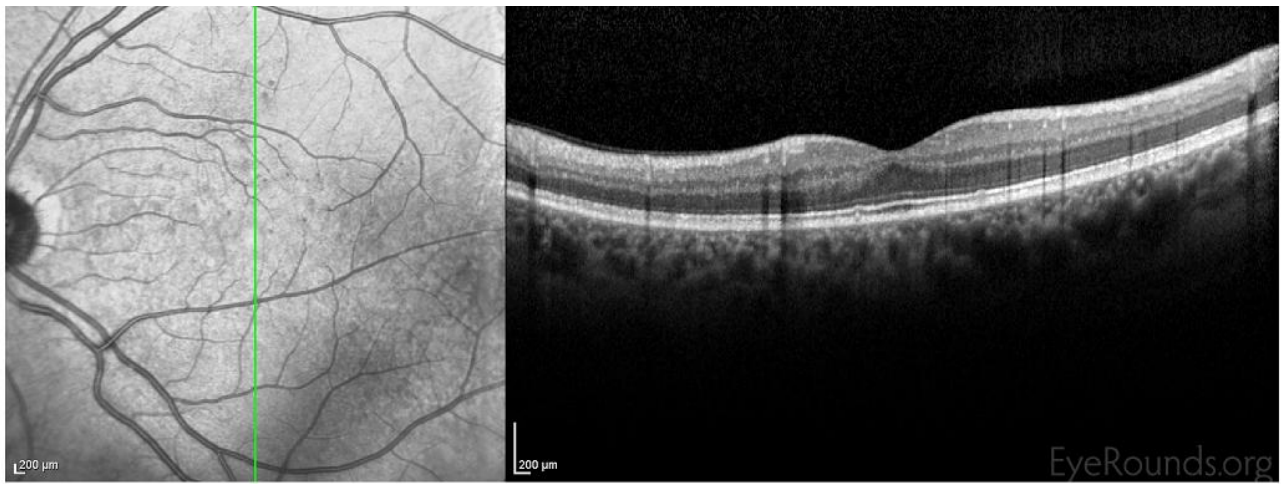
OCT OD

[Enlarge](#)

[Download](#)

IR 30° ART + OCT 30° (8.9 mm) ART (25) Q: 33 [HS]





OCT OS

 Enlarge

 Download



 Enlarge

 Download

### Image Permissions:



Ophthalmic Atlas Images by [EyeRounds.org](http://EyeRounds.org), [The University of Iowa](http://The University of Iowa) are licensed under a [Creative Commons Attribution-NonCommercial-NoDerivs 3.0 Unported License](http://creativecommons.org/licenses/by-nc-nd/3.0/).

## Address

University of Iowa  
Roy J. and Lucille A. Carver College  
of Medicine  
Department of Ophthalmology and  
Visual Sciences  
200 Hawkins Drive  
Iowa City, IA 52242

[Support Us](#)

## Legal

Copyright © 2019 The University of  
Iowa. All Rights Reserved  
[Report an issue with this page](#)  
[Web Privacy Policy](#) |  
[Nondiscrimination Statement](#)

## Related Links

[Cataract Surgery for Greenhorns](#)  
[EyeTransillumination](#)  
[Gonioscopy.org](#)  
[Iowa Glaucoma Curriculum](#)  
[Iowa Wet Lab](#)  
[Patient Information](#)  
[Stone Rounds](#)  
[The Best Hits Bookshelf](#)

## EyeRounds Social Media

Follow



Receive notification of new cases,  
[sign up here](#)  
[Contact Us](#)  
[Submit a Suggestion](#)