

Severe Proliferative Diabetic Retinopathy

Category(ies): Retina, Vitreous

Contributor: [William Flanary, MD](#)

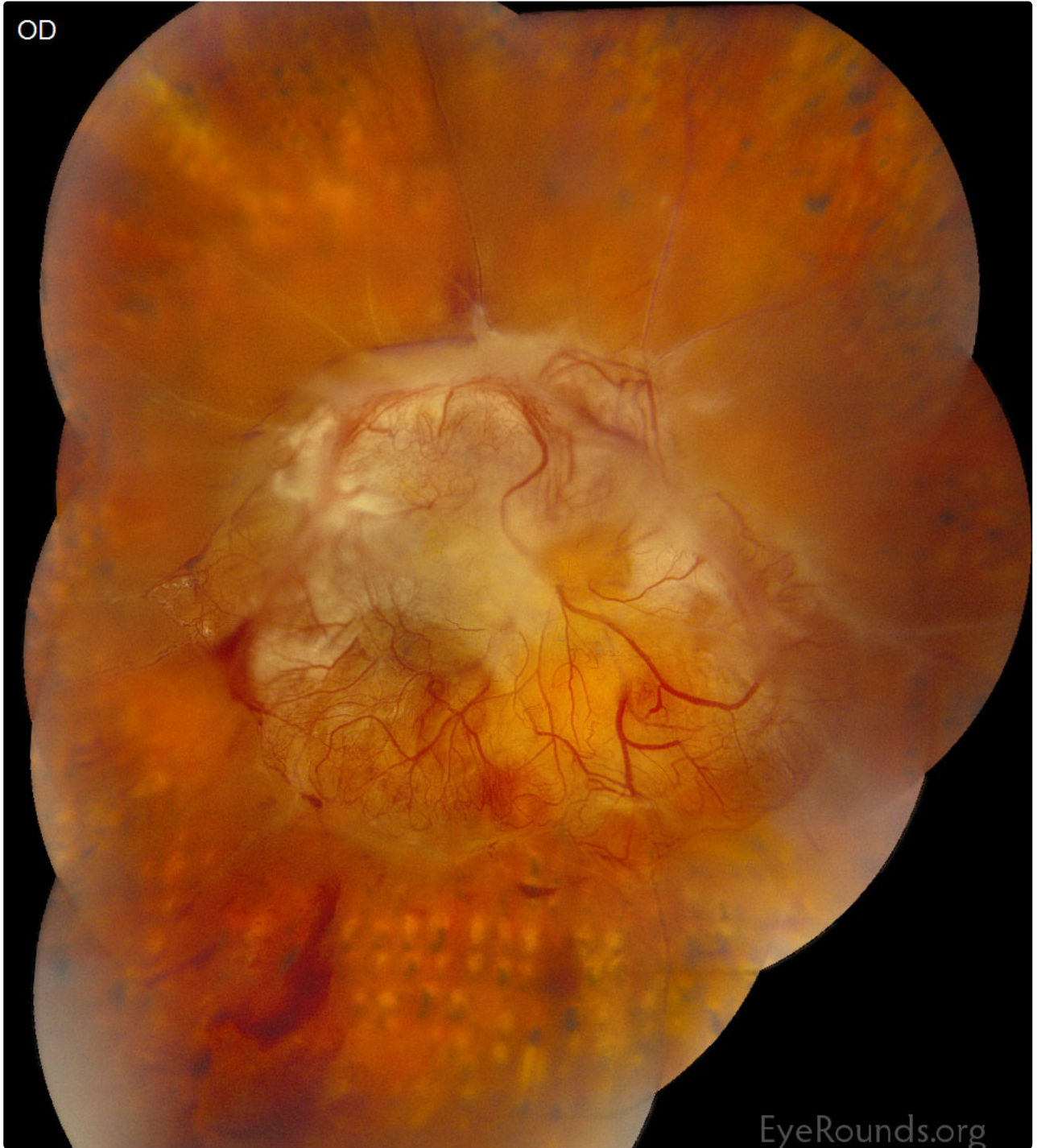
Photographer: Brice Critser



The patient is a 45-year-old woman with poorly controlled type I diabetes mellitus who presents with hand motion vision bilaterally. She has had panretinal photocoagulation in both eyes. The severe neovascularization obscures the optic nerves and has resulted in bilateral tractional retinal detachments involving the maculae. The detachment in the left eye has been present for too long to salvage with surgical intervention.



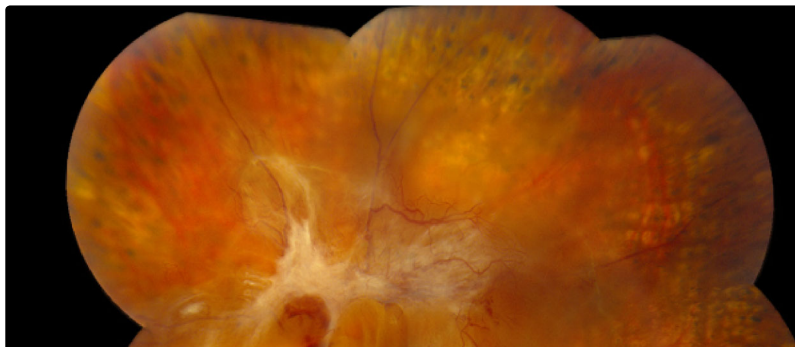
OD

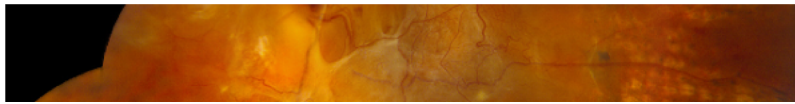


Right Eye

[Enlarge](#)

[Download](#)





Right Eye

 [Enlarge](#)

 [Download](#)

Image Permissions:



Ophthalmic Atlas Images by [EyeRounds.org](https://www.eyerounds.org), [The University of Iowa](https://www.theuniversityofiowa.edu) are licensed under a [Creative Commons Attribution-NonCommercial-NoDerivs 3.0 Unported License](https://creativecommons.org/licenses/by-nc-nd/3.0/).

Address

University of Iowa
Roy J. and Lucille A. Carver College
of Medicine
Department of Ophthalmology and
Visual Sciences
200 Hawkins Drive
Iowa City, IA 52242

[Support Us](#)

Legal

Copyright © 2019 The University of
Iowa. All Rights Reserved
[Report an issue with this page](#)
[Web Privacy Policy](#) |
[Nondiscrimination Statement](#)

Related Links

[Cataract Surgery for Greenhorns](#)
[EyeTransillumination](#)
[Gonioscopy.org](#)
[Iowa Glaucoma Curriculum](#)
[Iowa Wet Lab](#)
[Patient Information](#)
[Stone Rounds](#)
[The Best Hits Bookshelf](#)

EyeRounds Social Media

Follow



Receive notification of new cases,
[sign up here](#)
[Contact Us](#)
[Submit a Suggestion](#)