

## Acquired interface fluid after DSAEK graft rejection

Category(ies): [Cornea](#)

Contributor: [Jesse Vislisel, MD](#); [Mark Greiner, MD](#)

Photographer: [Toni Venckus, CRA](#)



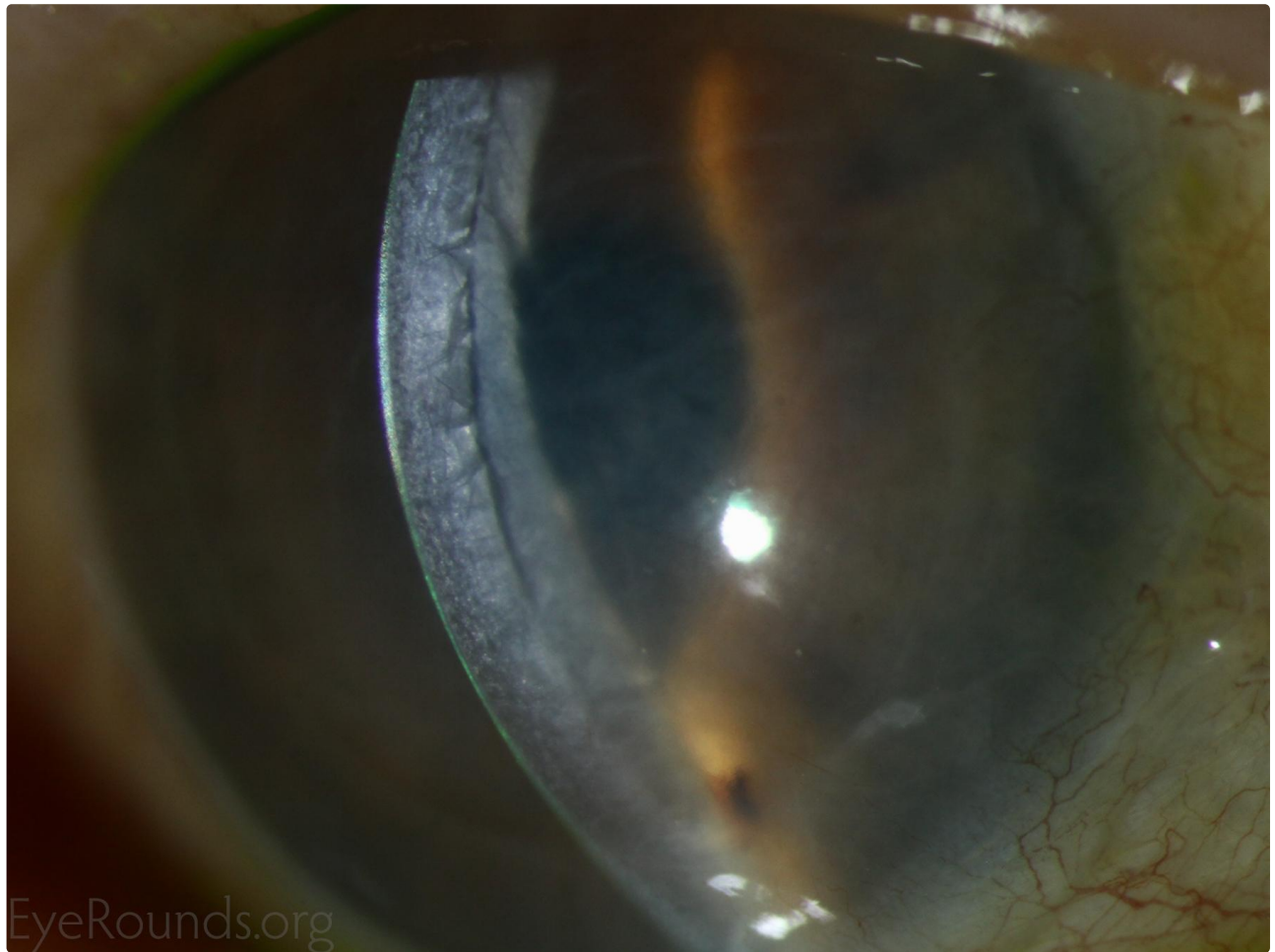
Interface fluid between a corneal endothelial graft and host cornea is commonly seen intraoperatively and in the immediate post-operative period, but resolves as the graft pumps fluid away from the interface.

This patient had massive corneal edema after an episode of acute allograft rejection of her DSAEK graft, resulting in acquired fluid accumulation in the graft-host interface. This fluid is visible in the slit beam as a black crescent between the graft and host tissue.



 Enlarge

 Download



 Enlarge

 Download

#### Image Permissions:



Ophthalmic Atlas Images by [EyeRounds.org](http://EyeRounds.org), [The University of Iowa](http://The University of Iowa) are licensed under a [Creative Commons Attribution-NonCommercial-NoDerivs 3.0 Unported License](https://creativecommons.org/licenses/by-nc-nd/3.0/).

#### Address

University of Iowa  
Roy J. and Lucille A. Carver College

#### Legal

#### Related Links

Cataract Surgery for Greenhorns  
EyeTransillumination

#### EyeRounds Social Media

Follow

of Medicine  
Department of Ophthalmology and  
Visual Sciences  
200 Hawkins Drive  
Iowa City, IA 52242

[Support Us](#)

Copyright © 2019 The University of  
Iowa. All Rights Reserved  
[Report an issue with this page](#)  
[Web Privacy Policy](#) |  
[Nondiscrimination Statement](#)

[Gonioscopy.org](#)  
[Iowa Glaucoma Curriculum](#)  
[Iowa Wet Lab](#)  
[Patient Information](#)  
[Stone Rounds](#)  
[The Best Hits Bookshelf](#)



Receive notification of new cases,  
[sign up here](#)  
[Contact Us](#)  
[Submit a Suggestion](#)