

## Conjunctival epithelial inclusion cyst

Category(ies): Cornea, External Disease

Contributor: [Jesse Vislisel, MD](#)

Photographer: Brice Critser, CRA



Epithelial inclusion cysts of the conjunctiva may be congenital or acquired. Acquired cysts form when epithelial cells are displaced into the substantia propria where they proliferate to form a cystic cavity filled with clear fluid. The cysts are usually asymptomatic and can typically be observed only. Below are photographs of three different appearances of conjunctival epithelial inclusion cysts in three different patients. Only the largest of the three was symptomatic, requiring surgical resection.



Patient 1

[Enlarge](#)

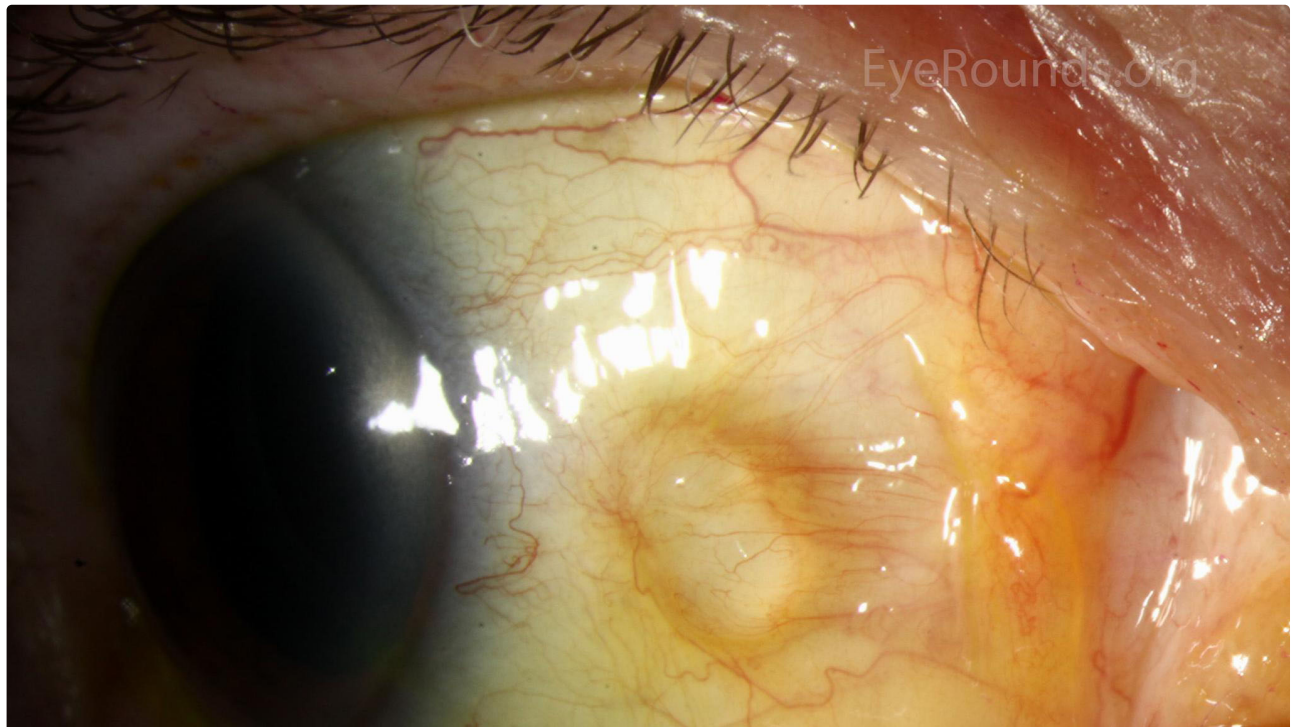
[Download](#)



Patient 1

[Enlarge](#)

[Download](#)



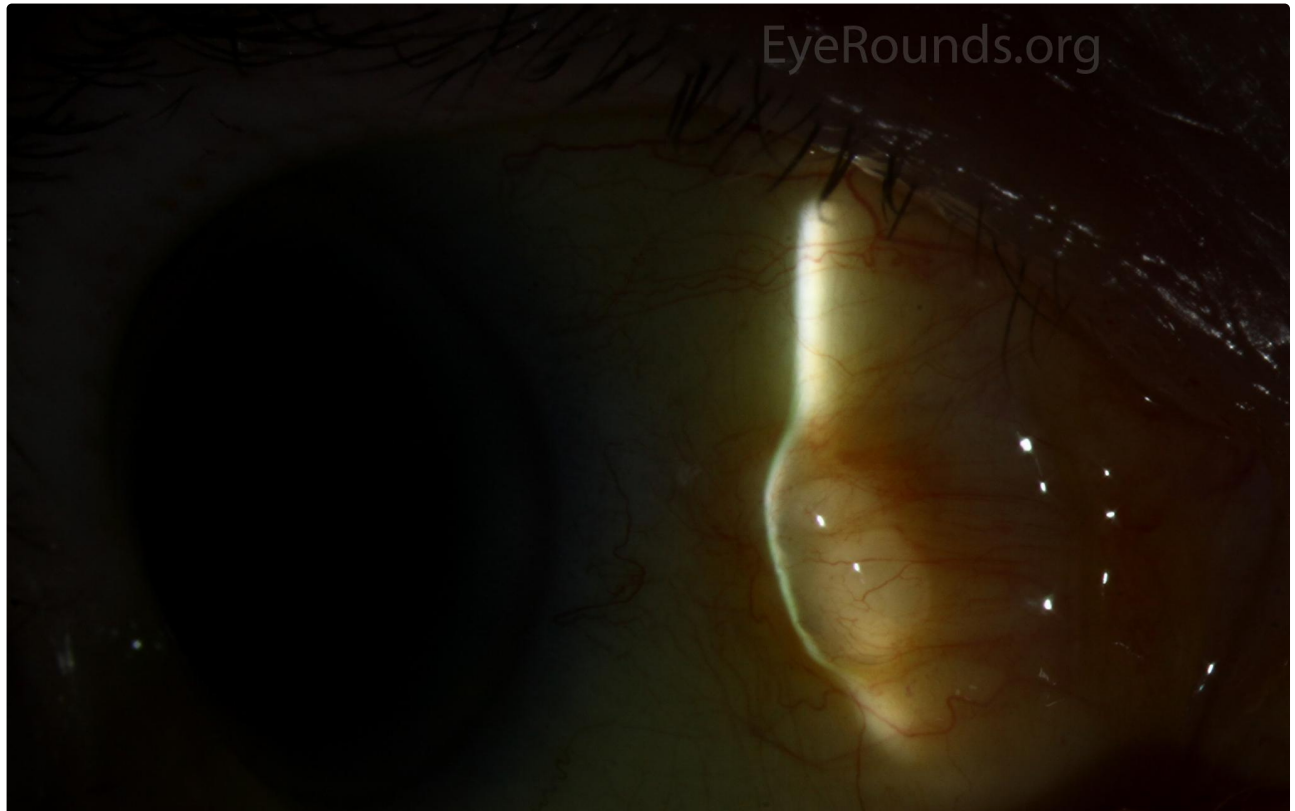


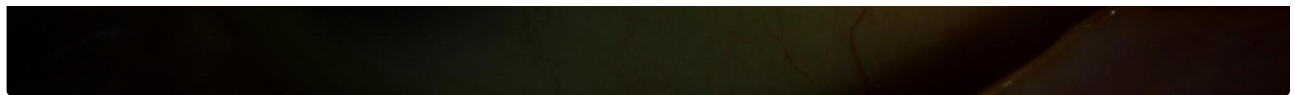
14  
53

Patient 2

[Enlarge](#)

[Download](#)

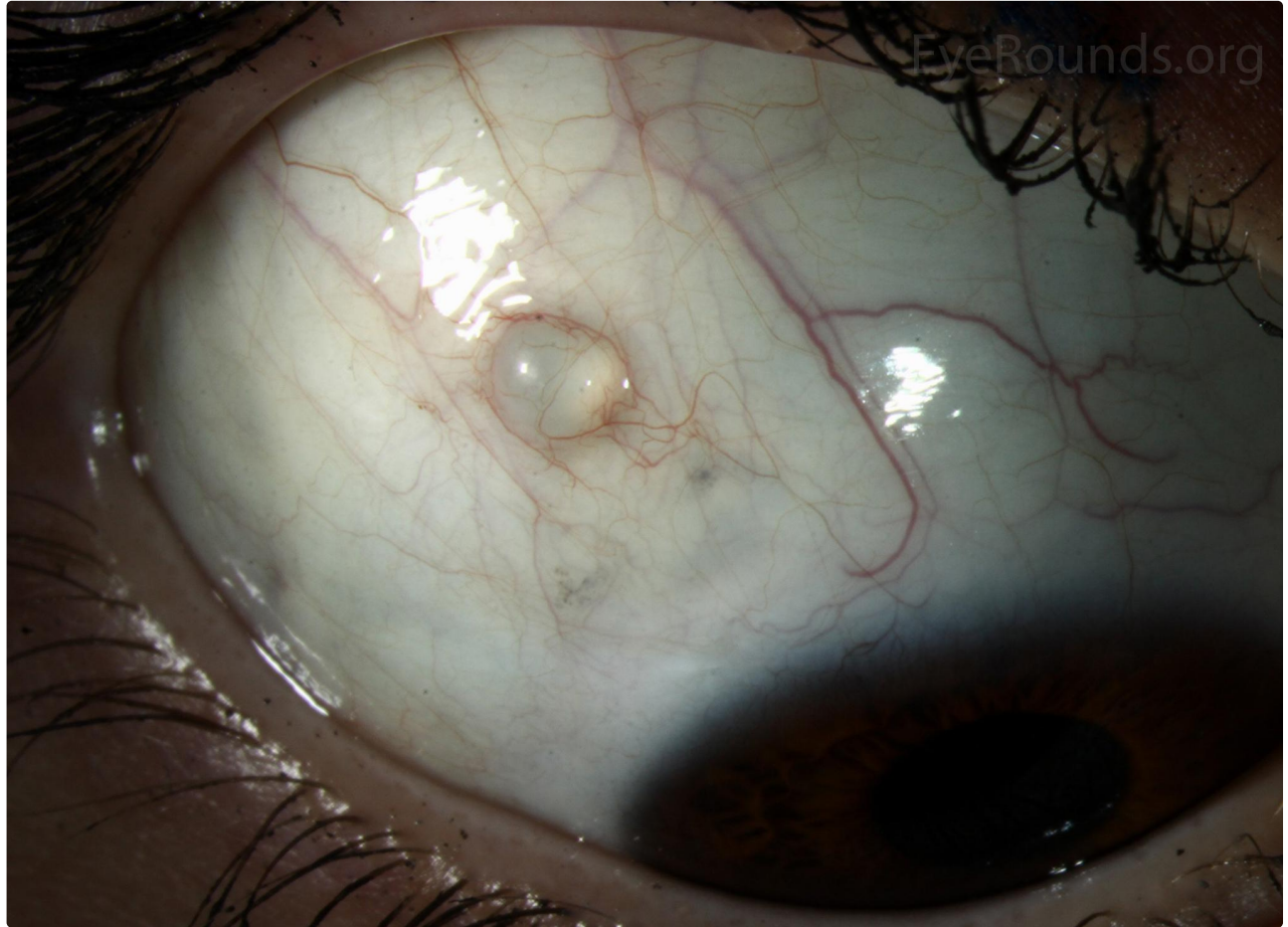




Patient 2

[Enlarge](#)

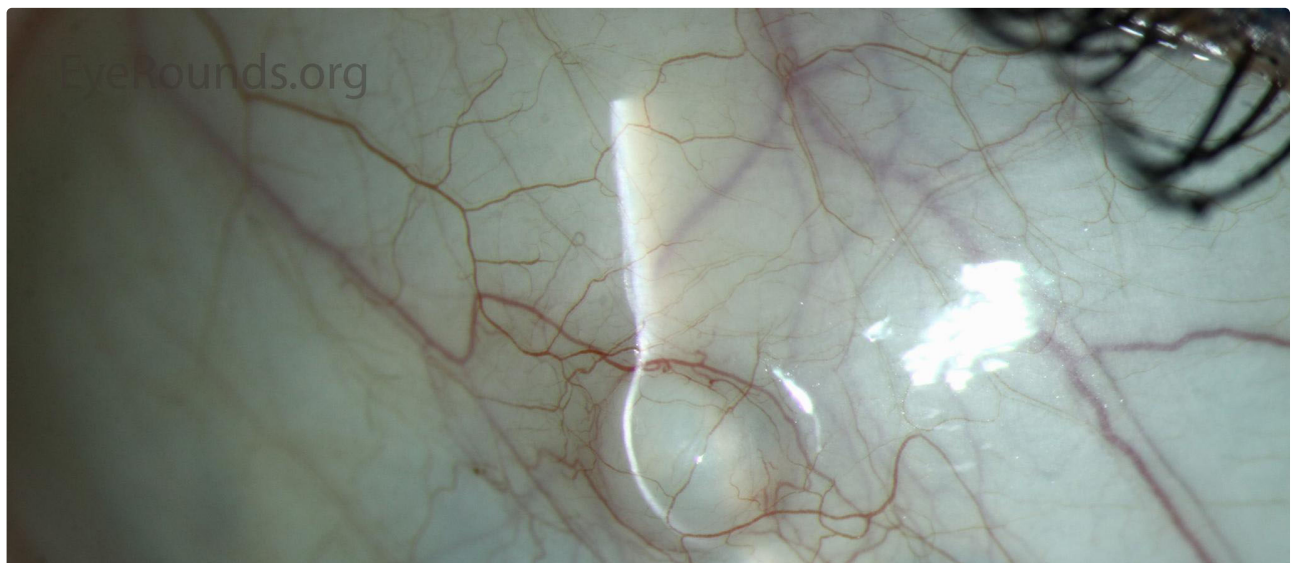
[Download](#)

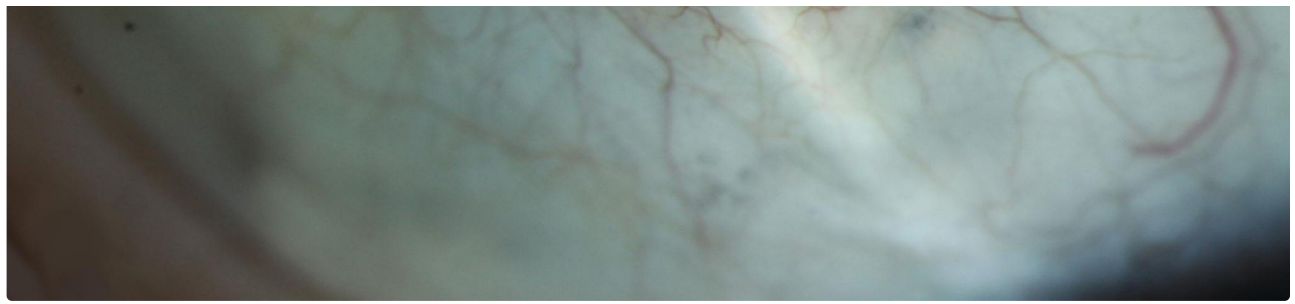


Patient 3

[Enlarge](#)

[Download](#)





Patient 3

 Enlarge

 Download

### Image Permissions:



Ophthalmic Atlas Images by [EyeRounds.org](http://EyeRounds.org), [The University of Iowa](http://The University of Iowa) are licensed under a [Creative Commons Attribution-NonCommercial-NoDerivs 3.0 Unported License](https://creativecommons.org/licenses/by-nc-nd/3.0/).

### Address

University of Iowa  
Roy J. and Lucille A. Carver College  
of Medicine  
Department of Ophthalmology and  
Visual Sciences  
200 Hawkins Drive  
Iowa City, IA 52242

[Support Us](#)

### Legal

Copyright © 2019 The University of  
Iowa. All Rights Reserved  
[Report an issue with this page](#)  
[Web Privacy Policy](#) |  
[Nondiscrimination Statement](#)

### Related Links

[Cataract Surgery for Greenhorns](#)  
[EyeTransillumination](#)  
[Gonioscopy.org](#)  
[Iowa Glaucoma Curriculum](#)  
[Iowa Wet Lab](#)  
[Patient Information](#)  
[Stone Rounds](#)  
[The Best Hits Bookshelf](#)

### EyeRounds Social Media

Follow



Receive notification of new cases,  
[sign up here](#)  
[Contact Us](#)  
[Submit a Suggestion](#)