

Peri-Vascular Lattice Degeneration

Category(ies): Retina, Vitreous

Contributor: [Eric Chin, MD](#)

Photographer: Stefani Karakas



74-year-old female who underwent recent epiretinal membrane peel in the right eye. Intraoperatively, she was found to have several small retinal tears in the periphery which were lasered for prophylaxis.

- BCVA: OD 20/20
- IOP: normal
- SLE: unremarkable
- DFE: OD next slide

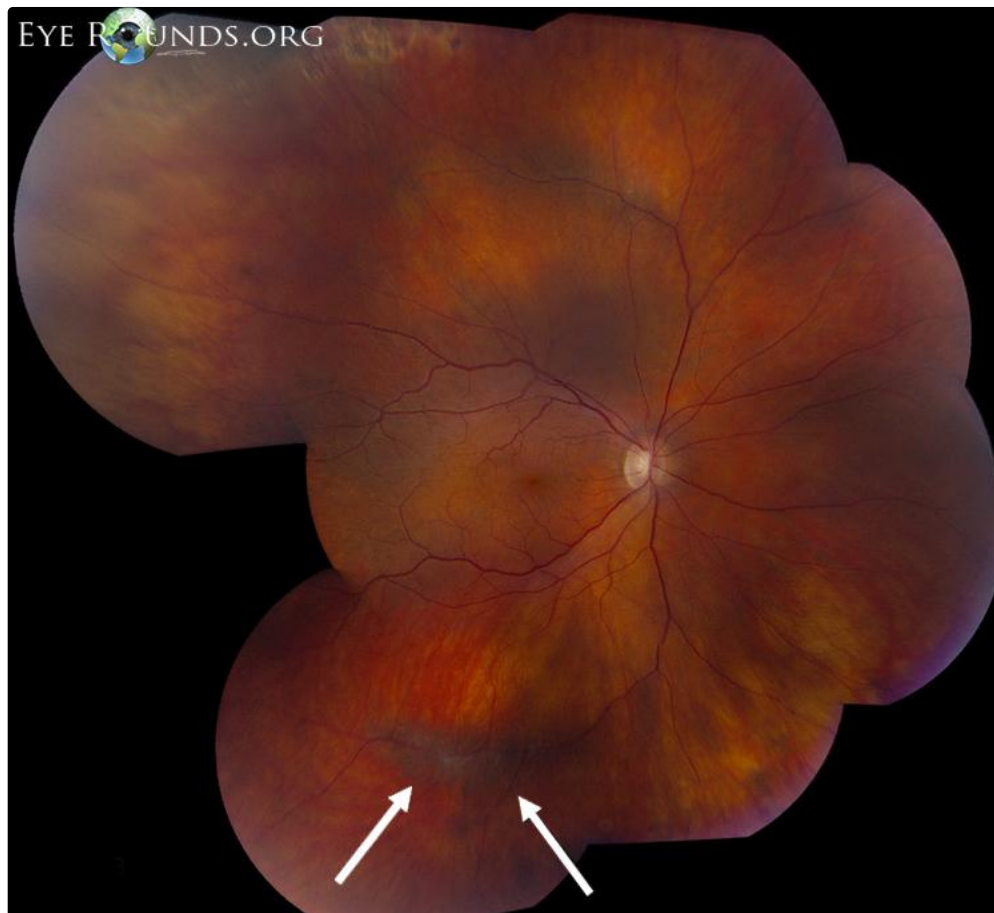


Figure 1: OD: radial perivascular lattice with sclerotic vessels and hyperplastic retinal pigment epithelium

[Enlarge](#) [Download](#)

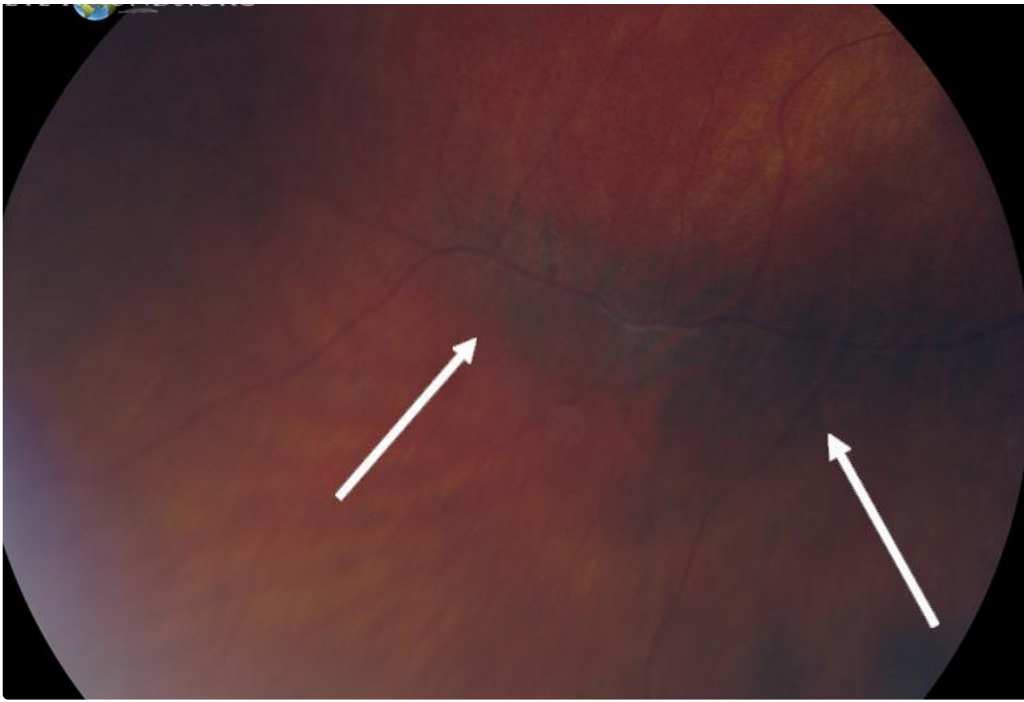


Figure 2: OD: higher magnification of radial perivascular lattice

[Enlarge](#) [Download](#)

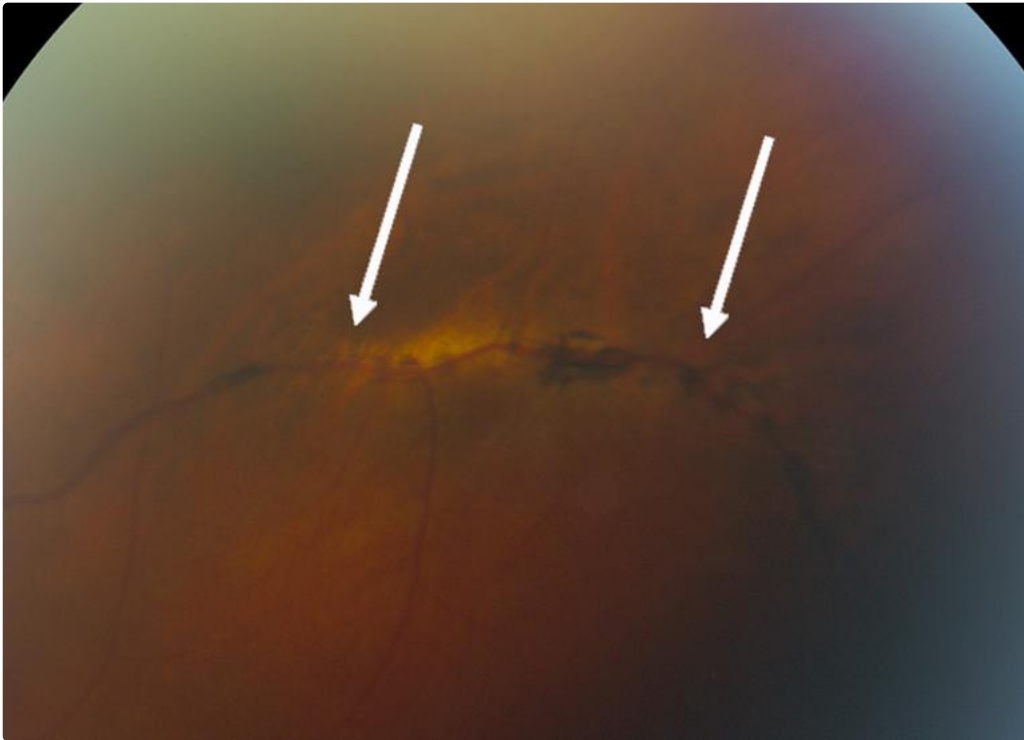


Figure 3: OS: radial perivascular lattice

[Enlarge](#) [Download](#)





Figure 4: OS: radial perivascular lattice

[Enlarge](#) [Download](#)

Lattice Degeneration

Histopathologically represents localized areas of inner retinal atrophy with loss of the internal limiting membrane, adherent vitreous to the edges of the lesion with an overlying pocket of liquefied vitreous, and sclerosis of the remaining retinal vessels.

Lattice degeneration is seen in approximately 10% of the population, but rarely leads to rhegmatogenous retinal detachments.

However, lattice degeneration is present in 20-40% of rhegmatogenous detachments.

Radial Perivascular Lattice Degeneration

Lattice lesions with retinal thinning and pigmentary disturbances along retinal vessels may be referred to as radial perivascular chorioretinal degeneration.

Typically seen more posteriorly along retinal vessels in comparison to traditional peripheral lattice degeneration.

May be an incidental finding, as in this case, or seen with hereditary vitreoretinal degenerations such as Stickler syndrome in which there is a high risk for rhegmatogenous retinal detachment.

References:

1. Byer NE. Long-term natural history of lattice degeneration of the retina. *Ophthalmology* 1989;96:1396-1402.
2. Lewis H. Peripheral retinal degenerations and the risk of retinal detachment. *Am J Ophthalmol* 2003;136:155-160.

Image Permissions:



Ophthalmic Atlas Images by EyeRounds.org, The University of Iowa are licensed under a [Creative Commons Attribution-NonCommercial-NoDerivs 3.0 Unported License](http://creativecommons.org/licenses/by-nc-nd/3.0/).

Address

University of Iowa
Roy J. and Lucille A. Carver College

Legal

Related Links

Cataract Surgery for Greenhorns
EyeTransillumination

EyeRounds Social Media

of Medicine
Department of Ophthalmology and
Visual Sciences
200 Hawkins Drive
Iowa City, IA 52242

[Support Us](#)

Copyright © 2019 The University of
Iowa. All Rights Reserved
[Report an issue with this page](#)
[Web Privacy Policy](#) |
[Nondiscrimination Statement](#)

[Gonioscopy.org](#)
[Iowa Glaucoma Curriculum](#)
[Iowa Wet Lab](#)
[Patient Information](#)
[Stone Rounds](#)
[The Best Hits Bookshelf](#)

Follow



[Receive notification of new cases,
sign up here](#)
[Contact Us](#)
[Submit a Suggestion](#)